

SUNNYSIDE COGENERATION ASSOCIATES  
**SCA #2 ASH LANDFILL**  
 CONSTRUCTION DRAWINGS SUBMITTAL  
 Carbon County, Utah

CONSTRUCTION PERMIT ISSUED BY  
 Utah Department of Environmental Quality  
 Utah Division of Water Quality

Date: 4 Sept. 2014

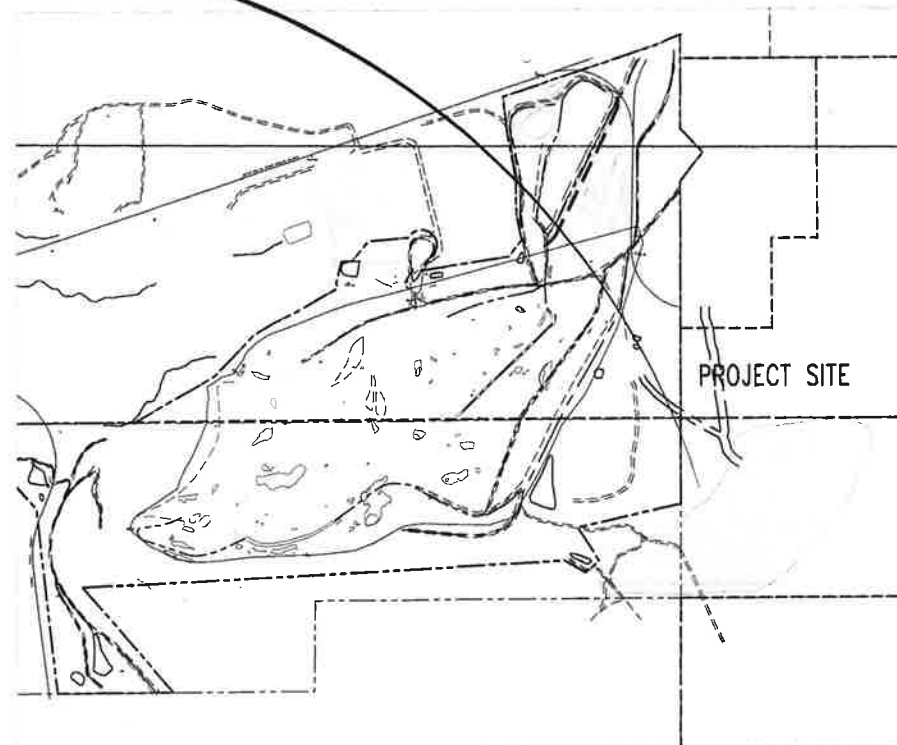
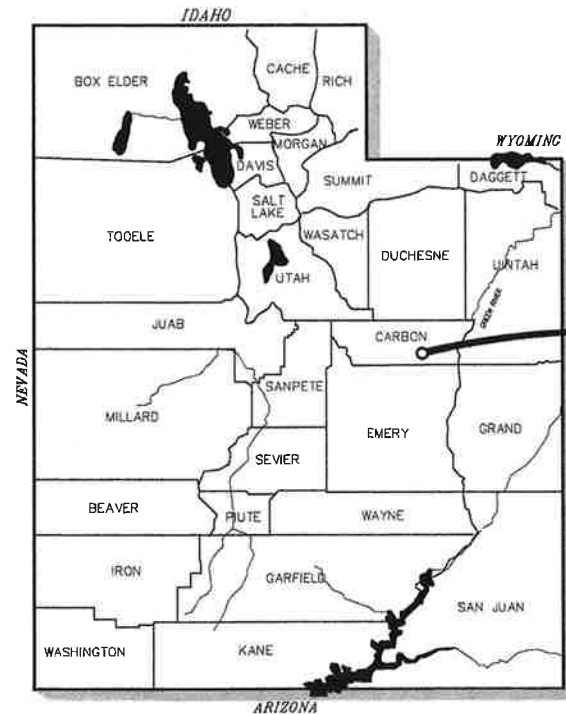
Review Engineer: [Signature]

Director: [Signature]



**Sheet Index**

- SHEET 1 - TITLE SHEET & SHEET INDEX
- SHEET 2 - BOUNDARY SURVEY
- SHEET 3 - EXISTING SITE CONDITIONS
- SHEET 4 - ACCESS ROUTE PLAN
- SHEET 5 - PROPOSED LANDFILL LAYOUT
- SHEET 6 - PROPOSED LANDFILL EARTHWORK CALCS
- SHEET 7 - OVERALL LANDFILL CROSS SECTIONS
- SHEET 8 - DRAINAGE PLAN
- SHEET 9 - SEDIMENT POND #018 DESIGN
- SHEET 9A - SEDIMENT POND #018 DESIGN EXISTING CONDITIONS
- SHEET 9B - SEDIMENT POND #018 DESIGN SURVEY CONTROL
- SHEET 9C - SEDIMENT POND #018 DESIGN CROSS SECTIONS
- SHEET 10 - SEDIMENT TRAP #1 DESIGN
- SHEET 10A - SEDIMENT TRAP #1 DESIGN EXISTING CONDITIONS
- SHEET 10B - SEDIMENT TRAP #1 DESIGN SURVEY CONTROL
- SHEET 10C - SEDIMENT TRAP #1 DESIGN CROSS SECTIONS
- SHEET 11 - SEDIMENT TRAP #2 DESIGN
- SHEET 11A - SEDIMENT TRAP #2 DESIGN EXISTING CONDITIONS
- SHEET 11B - SEDIMENT TRAP #2 DESIGN SURVEY CONTROL
- SHEET 11C - SEDIMENT TRAP #2 DESIGN CROSS SECTIONS
- SHEET 12 - LOWER ACCESS ROAD DESIGN



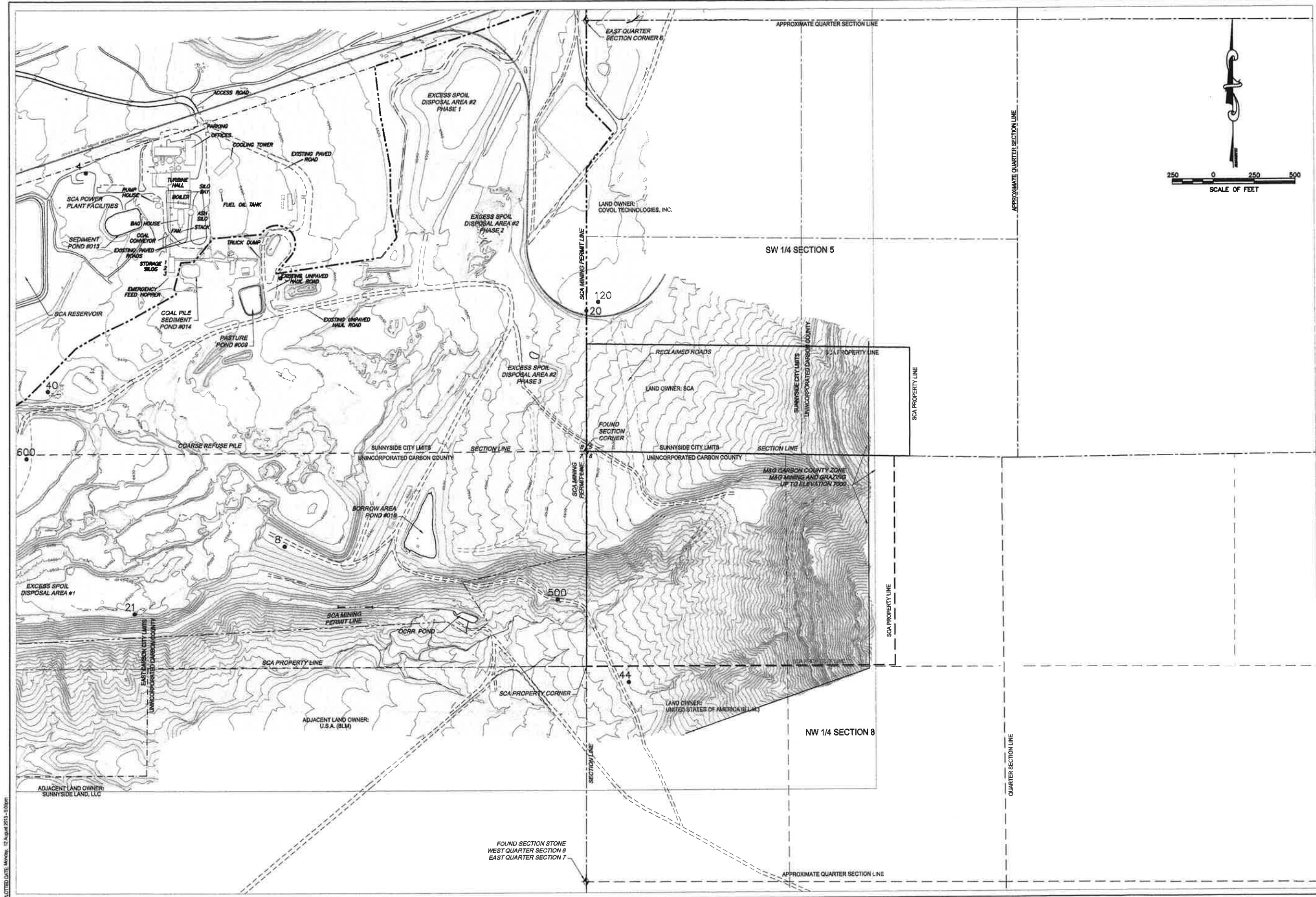
VICINITY MAP

LANDFILL DESIGN CHARACTERISTICS, INCLUDING SLOPE,  
 TERRACE WIDTHS, ELEVATION BETWEEN TERRACES AND OTHER  
 CONDITIONS ARE BASED ON REQUIREMENTS OUTLINED IN THE PSI  
 GEOTECHNICAL STUDY DATED APRIL 6, 2012

PLOTTED DATE: Tuesday, 13 August 2013 12:06pm







PLOTTED DATE: Monday, 12 August 2013 11:00am

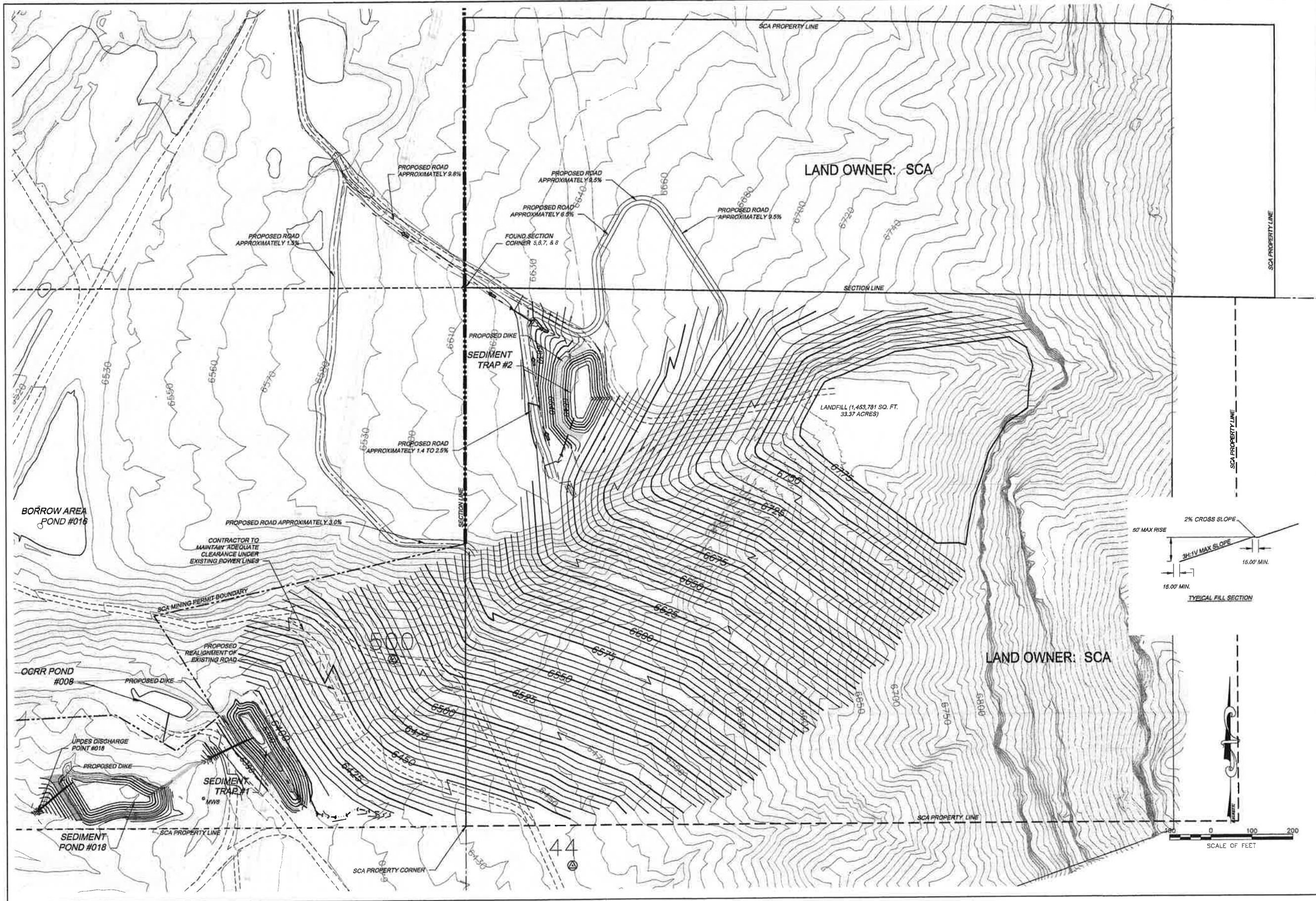
**SUNNYSIDE COGENERATION ASSOC.**  
**SCA #2 ASH LANDFILL CONSTRUCTION DRAWINGS**  
**EXISTING SITE CONDITIONS**  
 Carbon County, Utah



DWG DATE: **AUGUST 2013**  
 PLOT DATE: 12 August 2013

SHEET  
 3  
 12

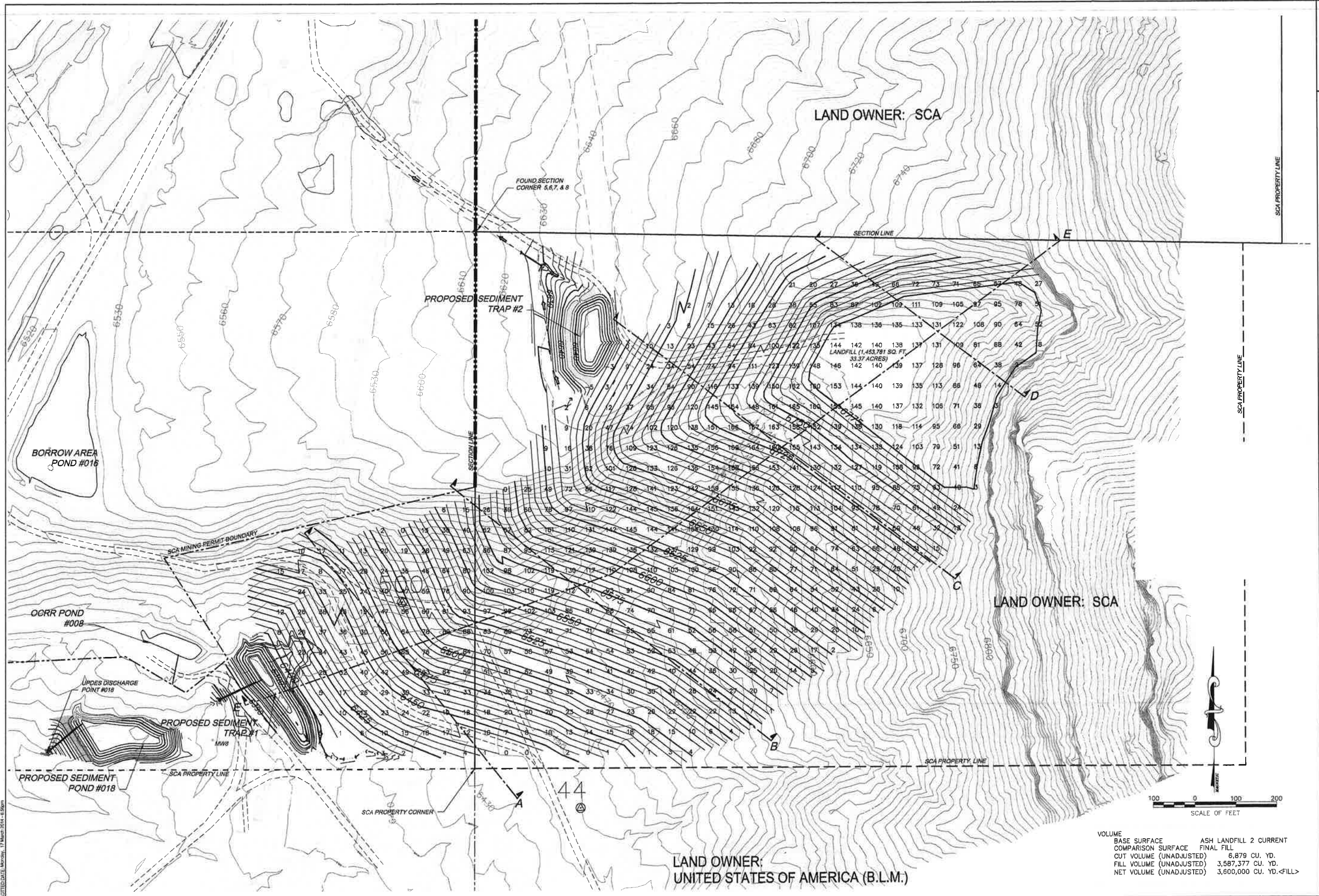




**SUNNYSIDE COGENERATION ASSOC.**  
**SCA #2 ASH LANDFILL CONSTRUCTION DRAWINGS**  
**PROPOSED LANDFILL LAYOUT**  
 Carbon County, Utah

**TWIN PEAKS**  
 Engineering & Land Surveying  
 2264 NORTH 1450 EAST LEHI, UTAH 84043  
 (801) 450-2511, (801) 439-0700 FAX

DATE:	NOV 2012
PLAT DATE:	17 March 2014
SHEET	5
OF	12



PLOTTED DATE: March 17, 2014 4:50pm

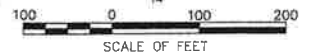
**SUNNYSIDE COGENERATION ASSOC.**  
**SCA #2 ASH LANDFILL CONSTRUCTION DRAWINGS**  
**PROPOSED LANDFILL EARTHWORK**  
 Carbon County, Utah

**TWIN PEAKS**  
 Engineering & Land Surveying  
 2264 NORTH 1450 EAST LEHI, UTAH 84043  
 (801) 450-3511, (801) 439-0700 FAX

DWG DATE: **AUGUST 2013**  
 PLOT DATE: 17 March 2014

SHEET **6**  
 12

VOLUME	BASE SURFACE	ASH LANDFILL 2 CURRENT
COMPARISON SURFACE	FINAL FILL	
CUT VOLUME (UNADJUSTED)	6,879 CU. YD.	
FILL VOLUME (UNADJUSTED)	3,587,377 CU. YD.	
NET VOLUME (UNADJUSTED)	3,600,000 CU. YD. <FILL>	



LAND OWNER: SCA

LAND OWNER: SCA

LAND OWNER:  
 UNITED STATES OF AMERICA (B.L.M.)

LANDFILL (1,453,781 SQ. FT.  
 33.37 ACRES)

FOUND SECTION  
 CORNER 5, 6, 7, & 8

PROPOSED SEDIMENT  
 TRAP #2

PROPOSED SEDIMENT  
 TRAP #1

BORROW AREA  
 POND #016

OGR POND  
 #008

UPDES DISCHARGE  
 POINT #018

PROPOSED SEDIMENT  
 POND #018

SCA MINING PERMIT BOUNDARY

SCA PROPERTY LINE

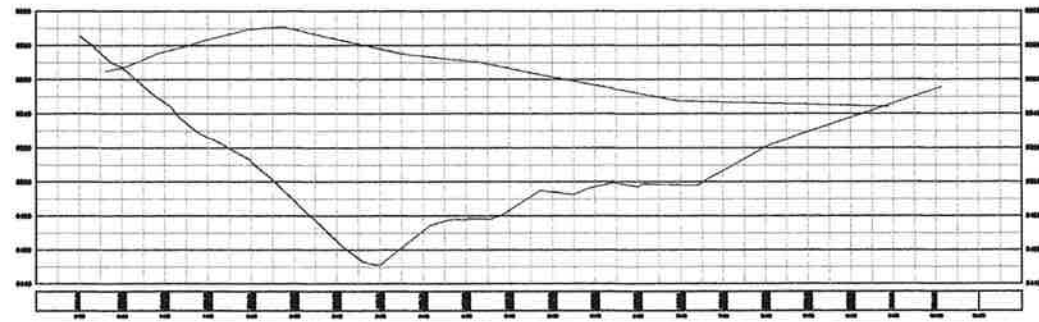
SCA PROPERTY LINE

SCA PROPERTY LINE

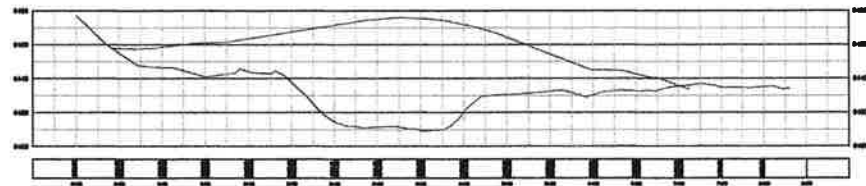
SCA PROPERTY LINE

SCA PROPERTY CORNER

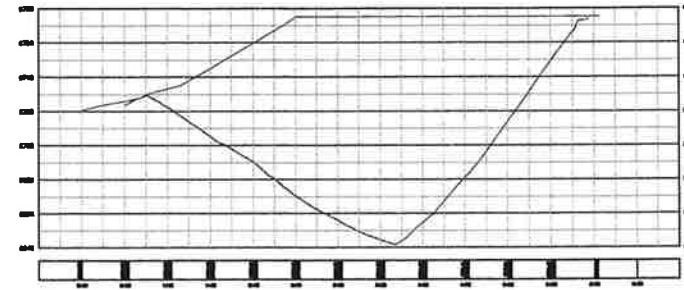
44



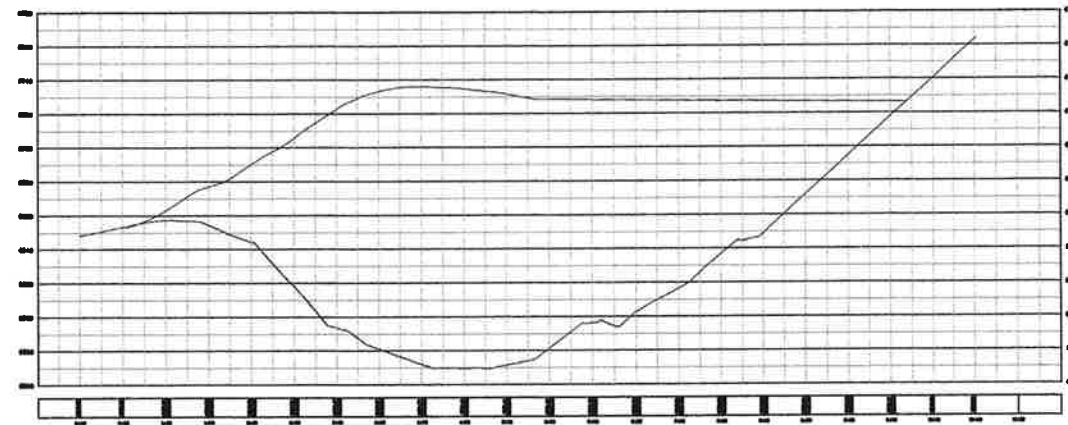
Alignment B



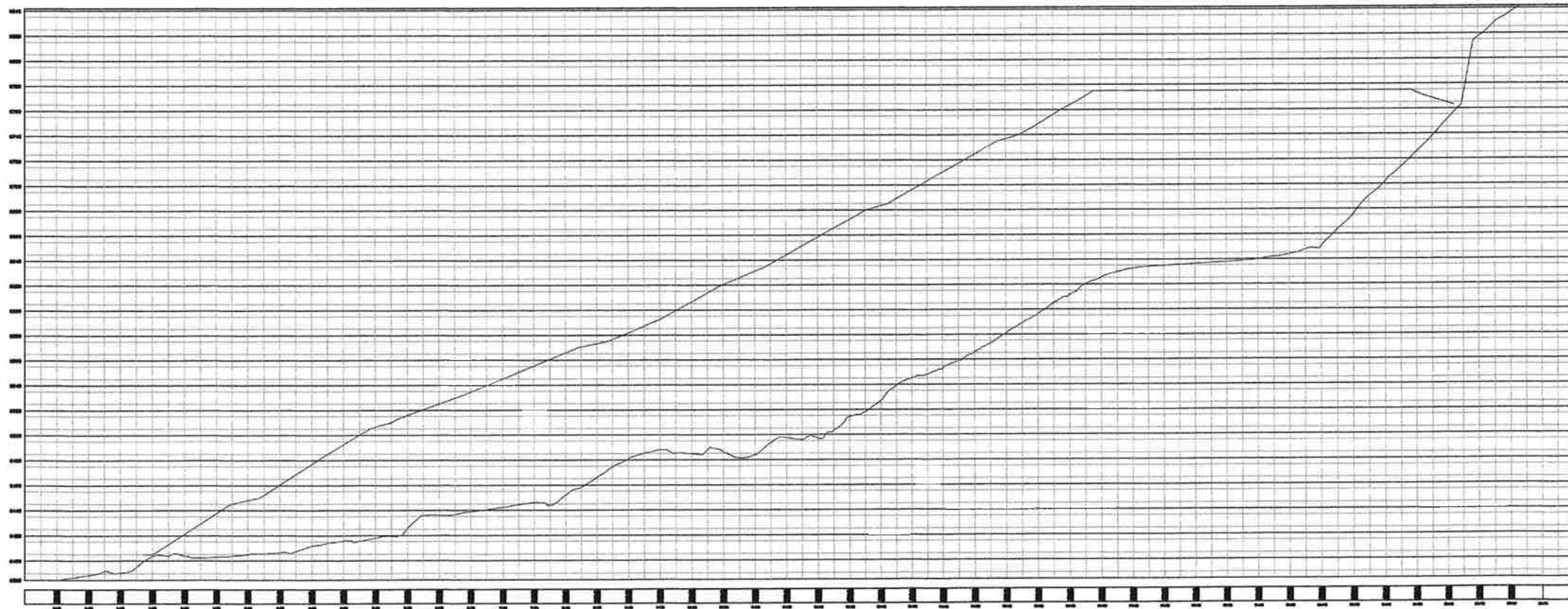
Alignment A



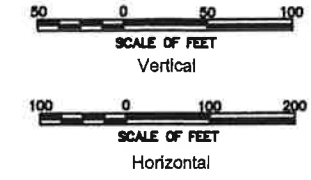
Alignment D



Alignment C



Alignment E



PLOT DATE: Monday, 12 August 2013, 10:13am

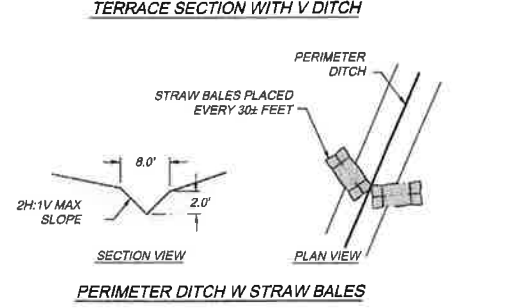
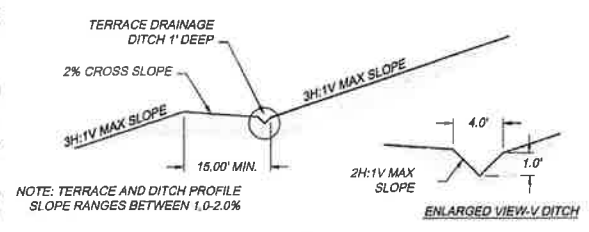
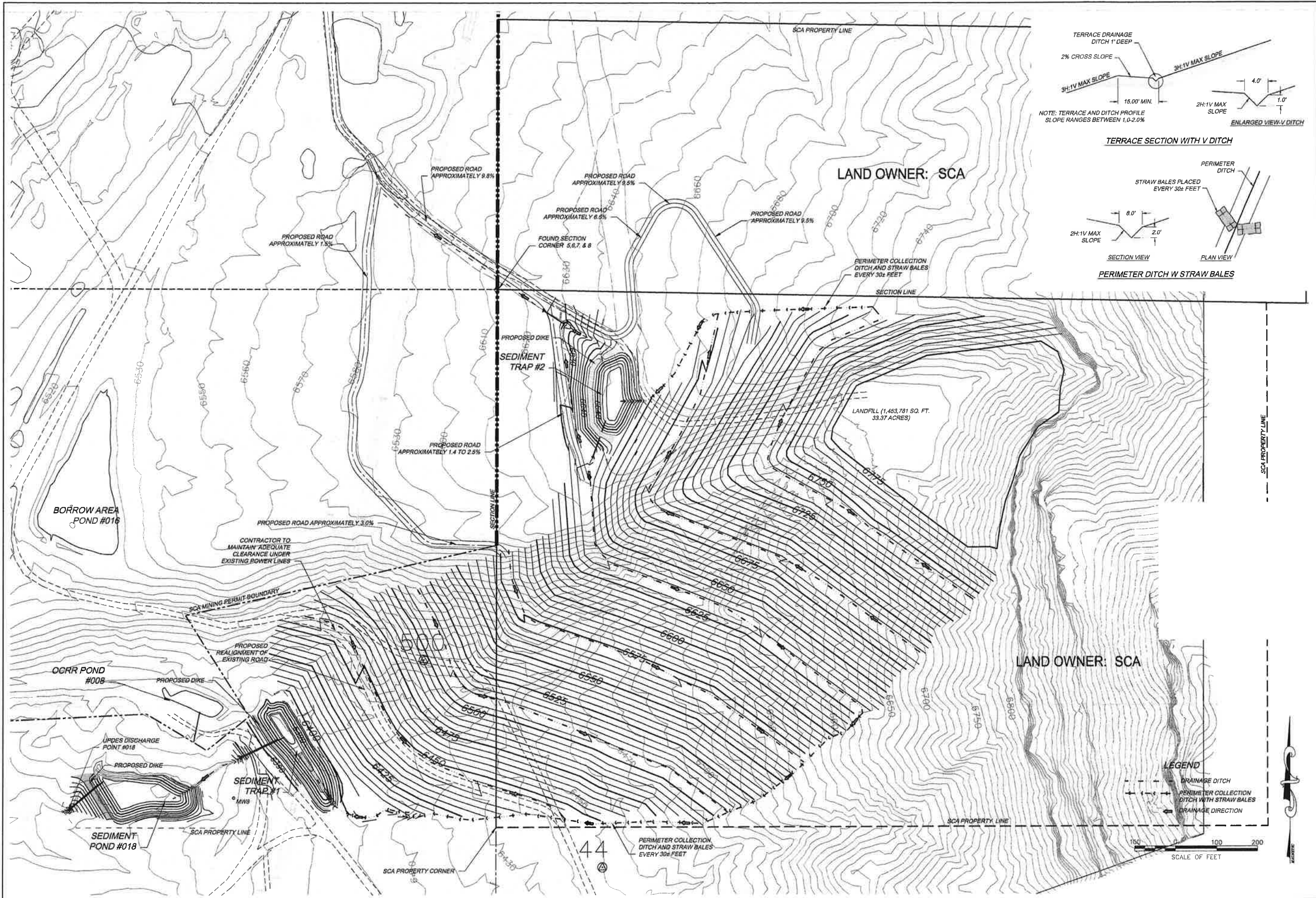
**SUNNYSIDE COGENERATION ASSOC.**  
**SCA #2 ASH LANDFILL CONSTRUCTION DRAWINGS**  
**CROSS SECTIONS**  
 Carbon County, Utah

**TWIN PEAKS**  
 Engineering & Land Surveying  
 2284 NORTH 1450 EAST LEHI, UTAH 84043  
 (801) 450-3511, (801) 439-0700 FAX

DWG DATE:  
**AUGUST 2013**

PLOT DATE:  
 12 August 2013

SHEET  
 7  
 12



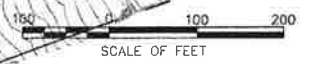
**SUNNYSIDE COGENERATION ASSOC.**  
**SCA #2 ASH LANDFILL CONSTRUCTION DRAWINGS**  
**PROPOSED DRAINAGE PLAN**  
 Carbon County, Utah

**TWIN PEAKS**  
 Engineering & Land Surveying  
 2264 NORTH 1450 EAST LEHI, UTAH 84043  
 (801) 450-3511, (801) 439-0700 FAX

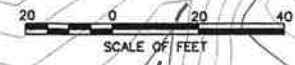
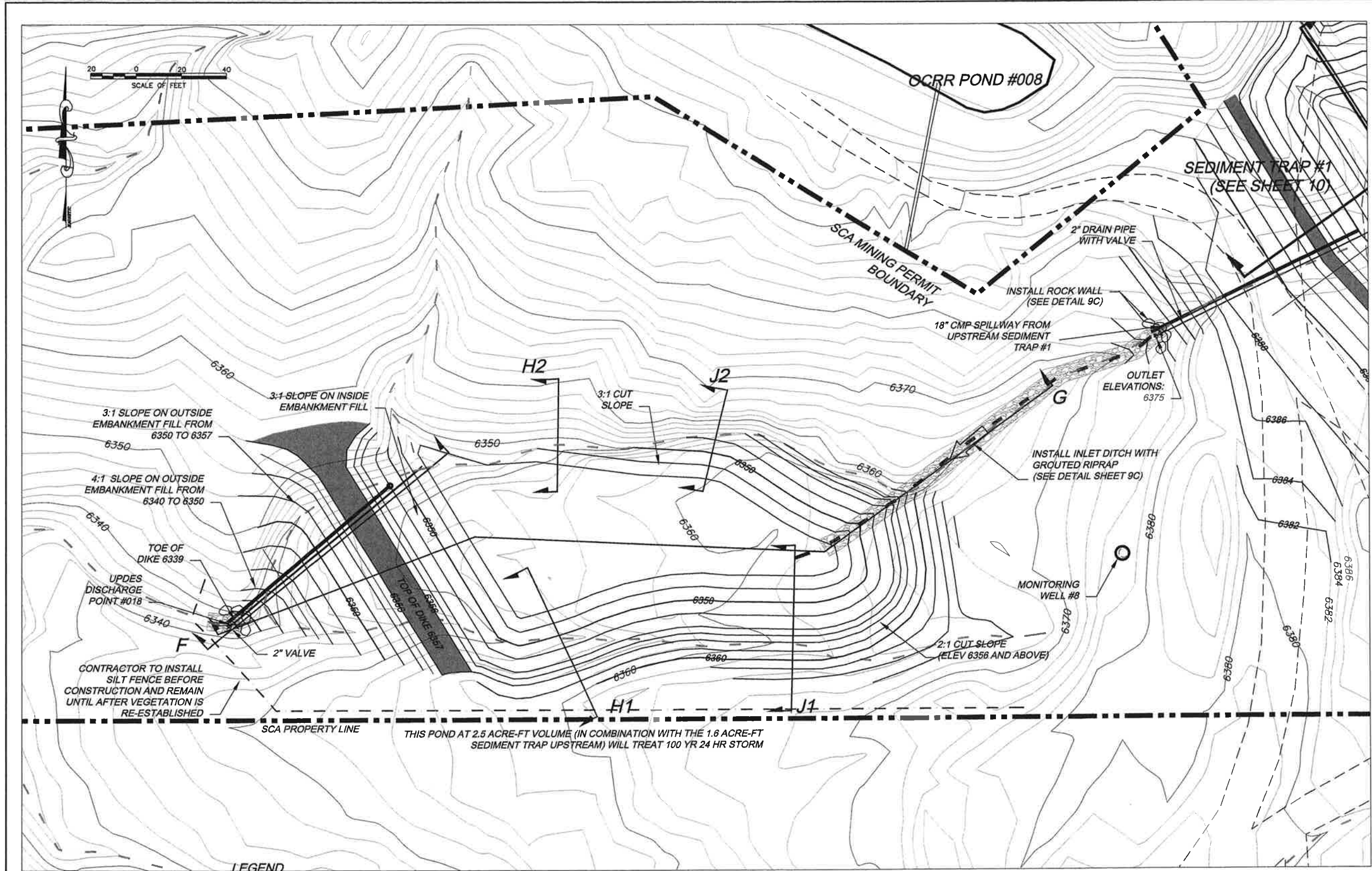
DWG DATE: AUGUST 2013  
 PLOT DATE: 17 March 2014

SHEET 8  
 12

- LEGEND**
- DRAINAGE DITCH
  - - - PERIMETER COLLECTION DITCH WITH STRAW BALES
  - DRAINAGE DIRECTION







**LEGEND**

— — — — —	PROPERTY LINE	— — — — —	PROPOSED CONTOURS
— — — — —	EXISTING ROADS	— — — — —	MAJOR
— — — — —	EXISTING CONTOURS	— — — — —	MINOR
— — — — —	MAJOR	— — — — —	SILT FENCE
— — — — —	MINOR	— — — — —	DRAINAGES
— — — — —	EXISTING DRAINAGES	— — — — —	PROPOSED DIKE

Volume  
 Base Surface ASH LANDFILL 2  
 Comparison Surface POND 18 FINAL  
 Cut volume (unadjusted) 6350 Cu. Yd.  
 Fill volume (unadjusted) 1500 Cu. Yd.  
 Net volume (unadjusted) 4850 Cu. Yd.<Cut>

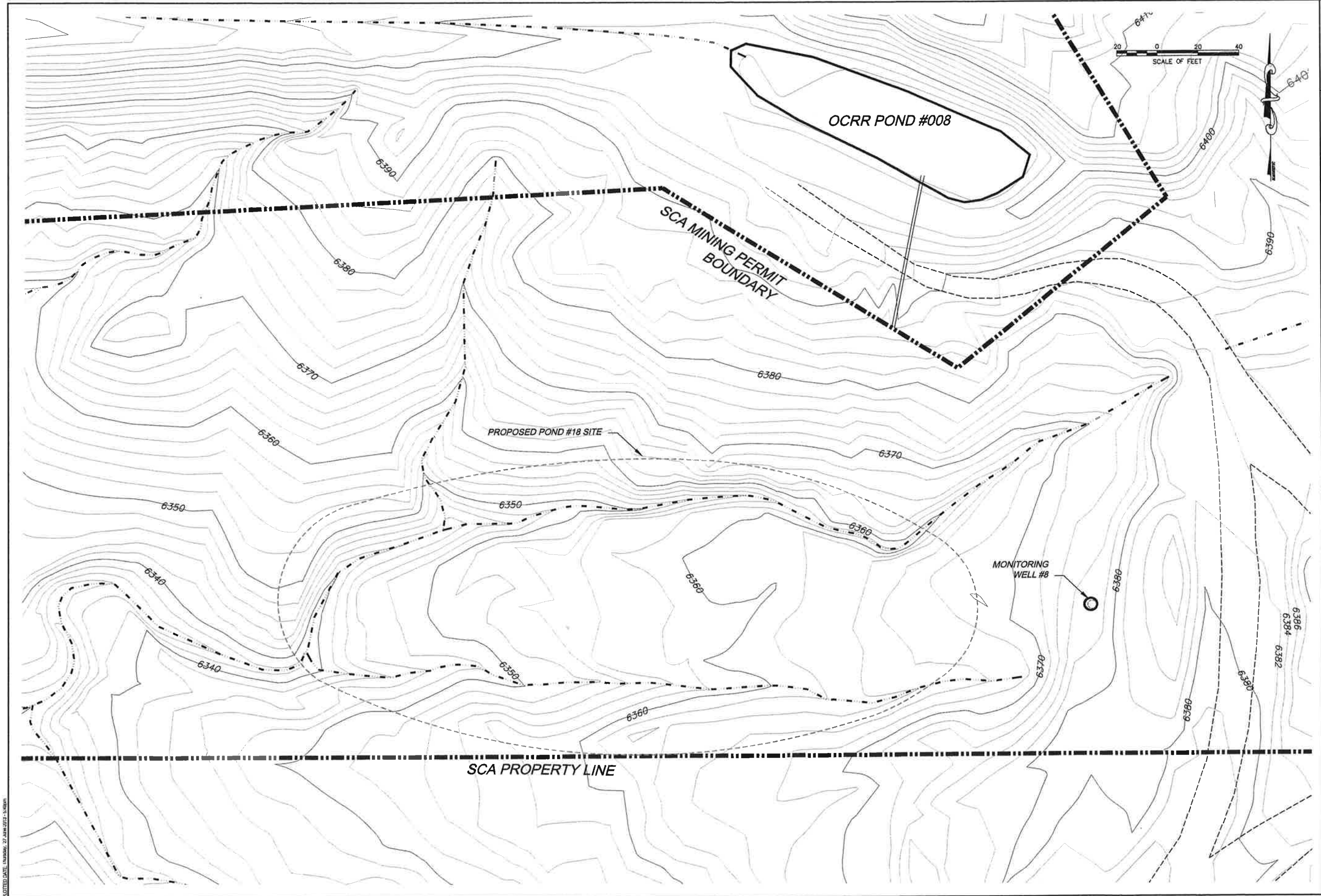
NOTE: CONTRACTOR TO INSTALL CLAY LINER IN POND TO ELEVATION 6356.0 (SEE DESIGN REPORT FOR LINER SPECIFICATIONS)

**SUNNYSIDE COGENERATION ASSOC.**  
 SCA #2 ASH LANDFILL CONSTRUCTION DRAWING  
 SEDIMENT POND #018 DESIGN  
 Carbon County, Utah

**TWIN PEAKS**  
 Engineering & Land Surveying  
 2264 NORTH 1450 EAST LEHI, UTAH 84043  
 (801) 450-3511, (801) 439-0700 FAX

DATE: JUNE 2013  
 DATE: 28 June 2013

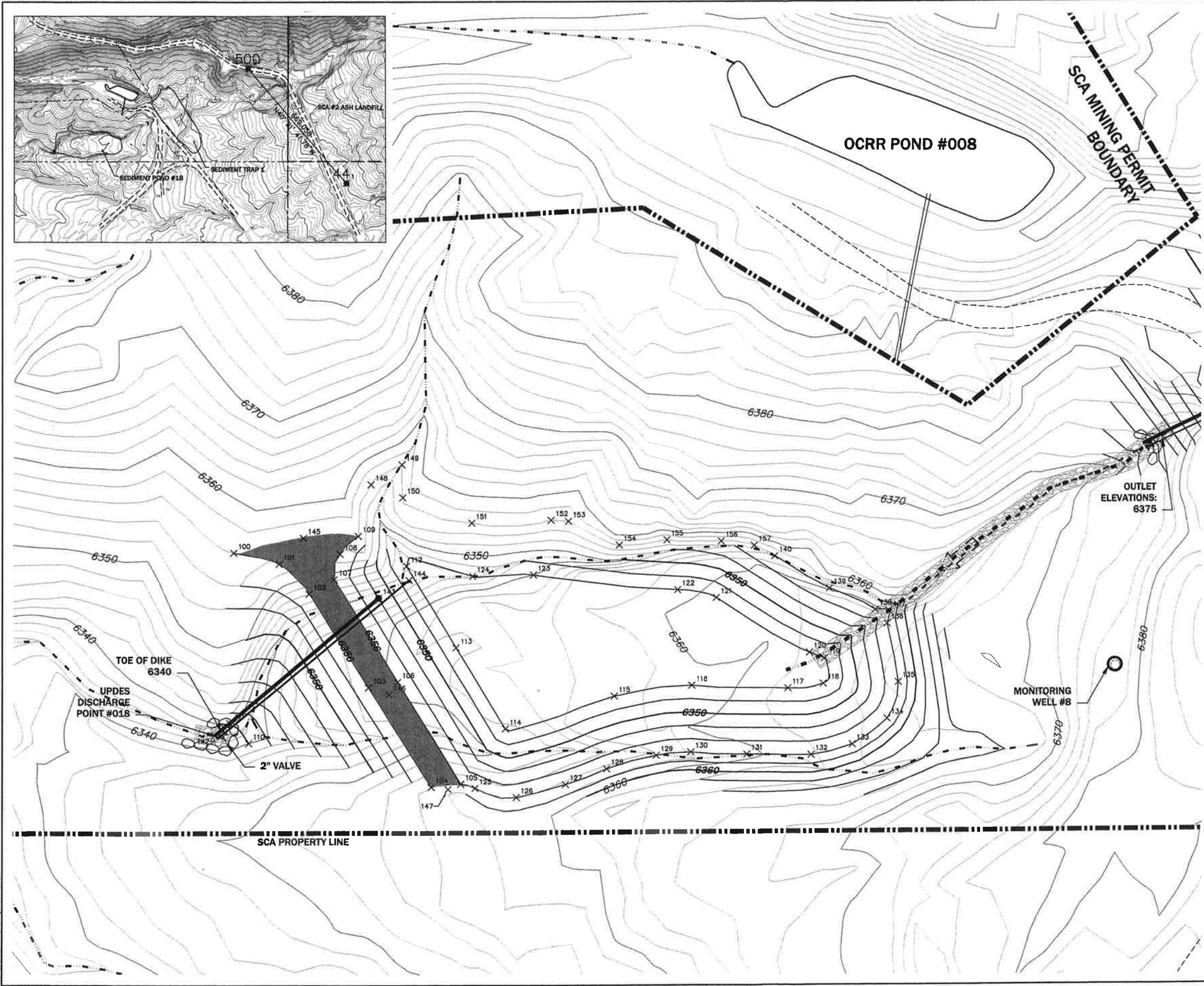
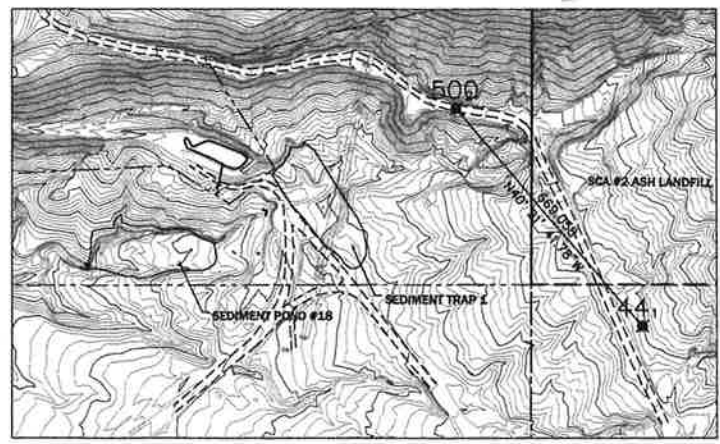
9



**SUNNYSIDE COGENERATION ASSOC.**  
 SCA #2 ASH LANDFILL CONSTRUCTION DRAWINGS  
 SEDIMENT POND #018 EXISTING CONDITIONS  
 Carbon County, Utah

**TWIN PEAKS**  
 Engineering & Land Surveying  
 2264 NORTH 1450 EAST LEHI, UTAH 84043  
 (801) 450-3511, (801) 439-0700 FAX

DATE: JUNE 2013  
 DATE: 27 June 2013



Point #	Northing	Easting	Elevation	Raw Description
1	42029.67	47570.37	6449.87	AERIAL POINT 44
2	42699.48	47137.06	6438.87	AERIAL POINT 500-gate
100	42261.51	46296.12	6356.00	dike
101	42246.50	46306.13	6356.00	dike
102	42233.08	46318.38	6356.00	dike
103	42190.98	46345.39	6356.00	dike
104	42146.07	46372.88	6356.00	dike
105	42147.39	46386.09	6356.00	top clay liner
106	42193.48	46368.31	6356.00	top clay liner
107	42239.57	46390.84	6356.00	top clay liner
108	42280.98	46333.08	6356.00	top clay liner
109	42290.01	46341.04	6356.00	top clay liner
110	42185.92	46292.68	6340.00	top dike
111	42175.02	46284.43	6340.00	top dike
112	42246.84	46363.27	6348.00	top dike
113	42208.91	46384.21	6348.00	top dike
114	42172.28	46406.14	6348.00	top dike
116	42186.90	46454.26	6348.00	top pond
118	42191.68	46489.02	6346.00	top pond
117	42190.26	46531.68	6346.00	top pond
118	42182.34	46547.41	6346.00	top pond
119	42203.73	46547.91	6346.00	top pond
120	42206.36	46541.29	6346.00	top pond
121	42231.10	46499.98	6348.00	top pond
123	42234.67	46483.01	6346.00	top pond
123	42241.49	46418.77	6346.00	top pond
124	42240.96	46391.88	6346.00	top pond
125	42245.61	46392.46	6356.00	top clay liner
126	42141.38	46410.90	6356.00	top clay liner
127	42147.21	46432.56	6356.00	top clay liner
128	42154.20	46460.77	6356.00	top clay liner
129	42180.14	46473.05	6356.00	top clay liner
130	42181.62	46488.47	6356.00	top clay liner
131	42190.59	46512.38	6356.00	top clay liner
132	42180.26	46541.77	6356.00	top clay liner
133	42184.94	46660.24	6356.00	top clay liner
134	42176.47	46576.83	6356.00	top clay liner
135	42182.96	46580.97	6356.00	top clay liner
136	42219.26	46576.02	6356.00	top clay liner
137	42225.02	46576.94	6356.00	top clay liner
138	42225.54	46570.77	6356.00	top clay liner
139	42235.13	46580.31	6356.00	top clay liner
140	42249.60	46528.12	6356.00	top clay liner
142	42189.48	46277.70	6339.00	END 18" PIPE
143	42231.23	46348.89	6345.00	Flow 18" pipe
144	42239.23	46363.36	6348.00	2" DRAIN PIPE
148	42187.79	46354.38	6357.00	TOP DIKE
147	42145.07	46380.41	6357.00	top of dike
148	42282.05	46346.89	6356.00	top clay liner
149	42280.95	46380.38	6356.00	top clay liner
150	42276.28	46360.87	6356.00	top clay liner
151	42264.80	46391.28	6356.00	top clay liner
152	42266.01	46428.71	6356.00	top clay liner
153	42265.48	46434.33	6356.00	top clay liner
154	42264.78	46466.78	6356.00	top clay liner
155	42267.05	46478.17	6356.00	top clay liner
156	42266.43	46502.27	6356.00	top clay liner
157	42264.41	46517.07	6356.00	top clay liner

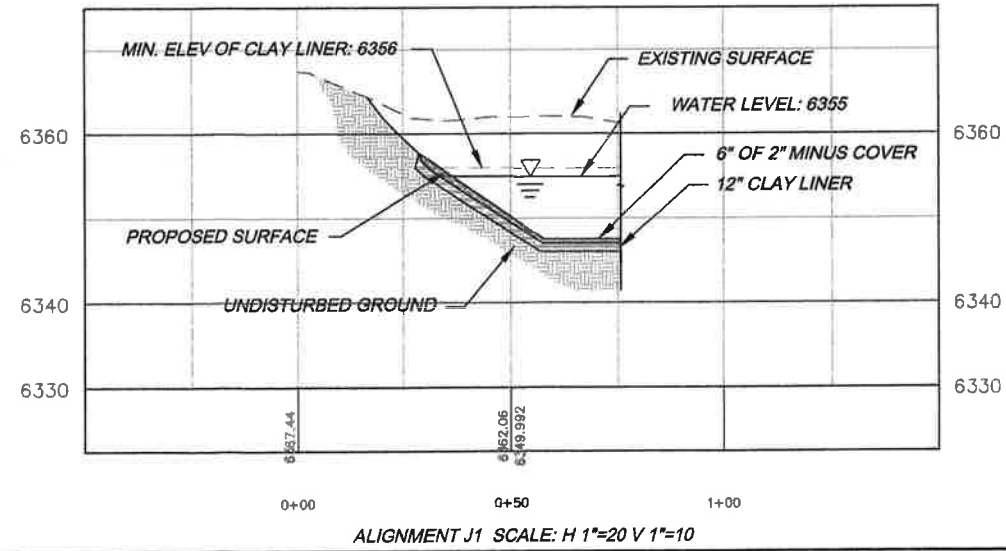
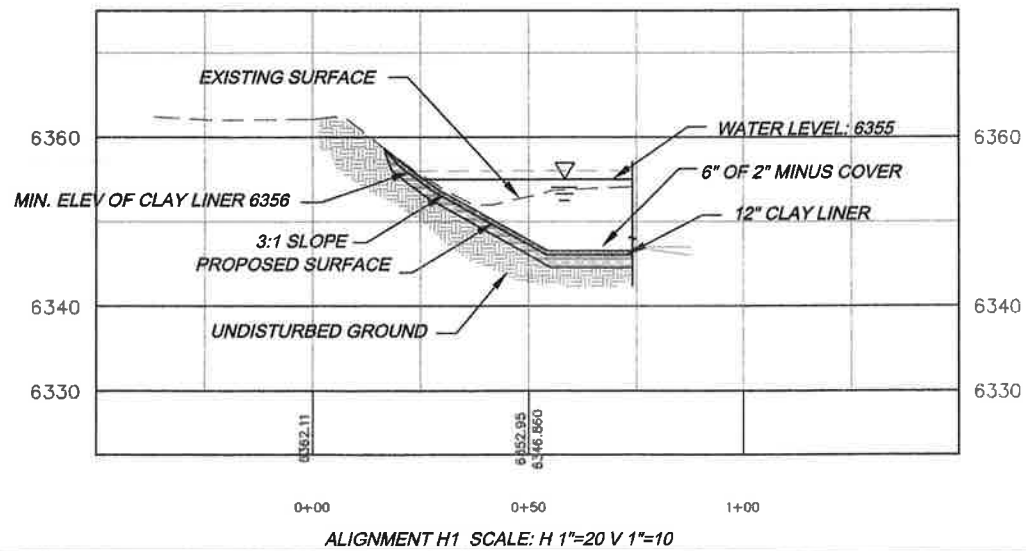
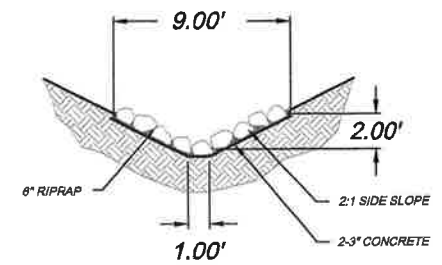
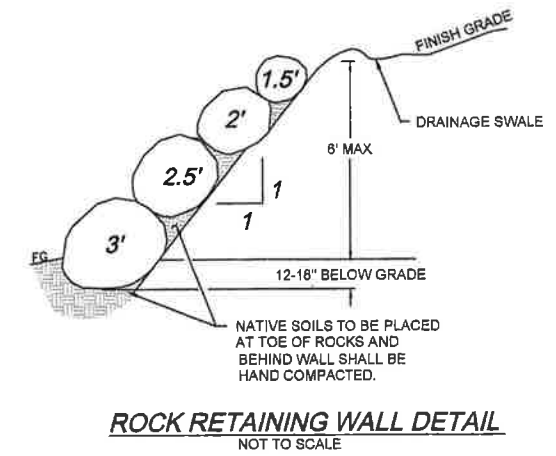
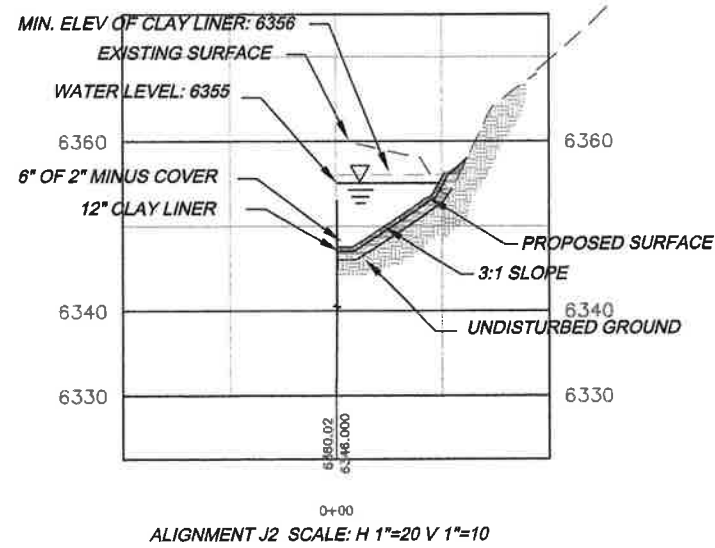
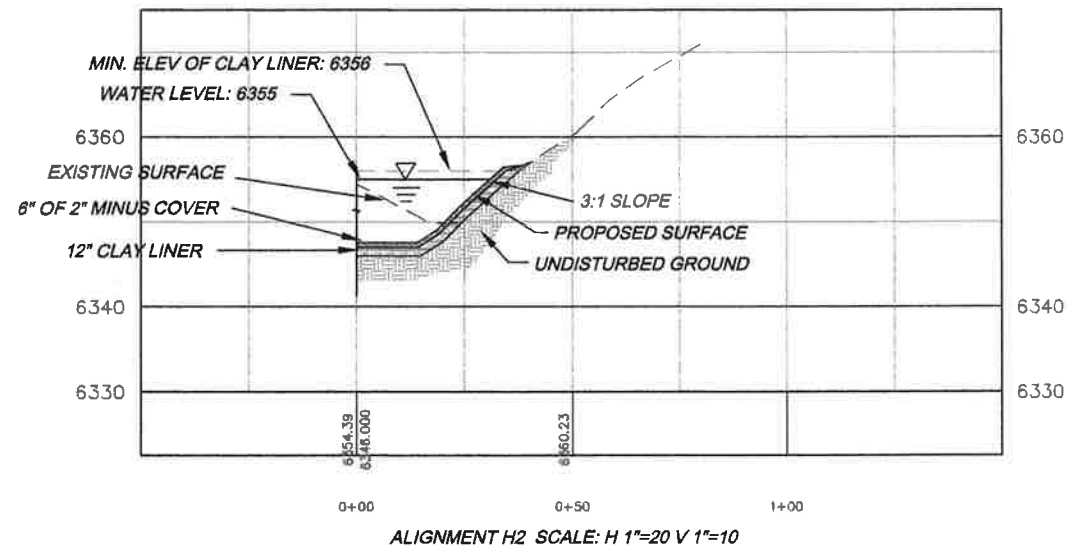
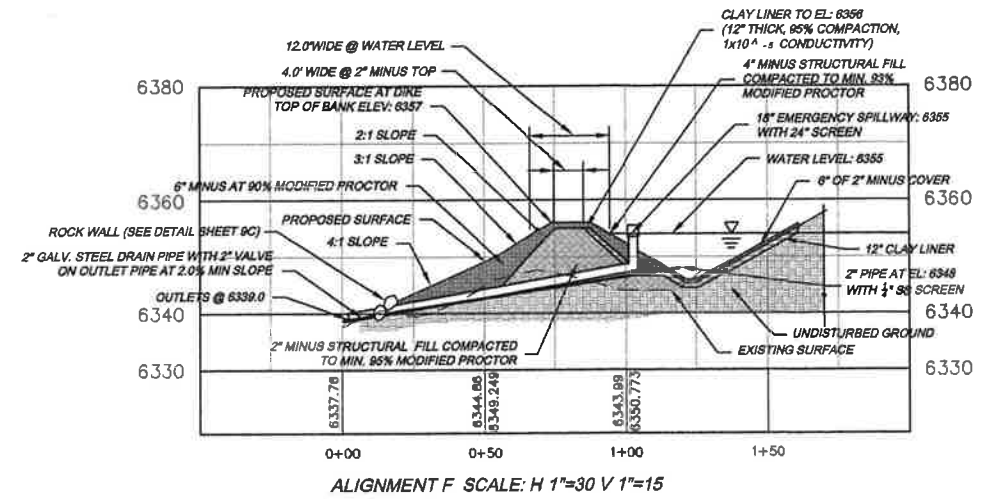
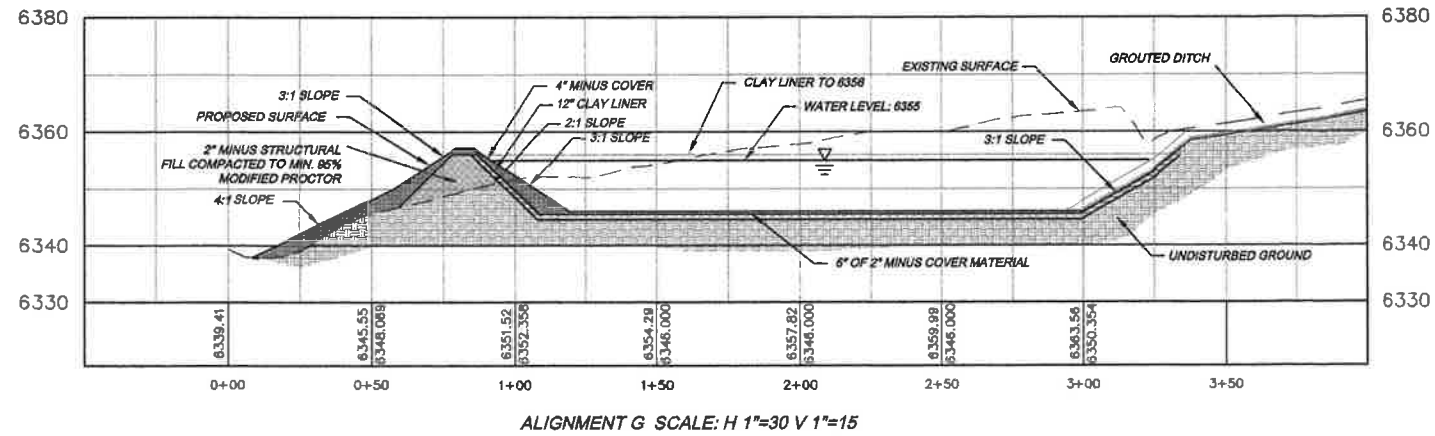
NOTE: STAKEOUT COORDINATES ARE PROVIDED FOR THE CONVENIENCE OF THE CONSTRUCTION TEAM.  
 THE CONTRACTOR SHALL BE RESPONSIBLE FOR PROPER LAYOUT AND CONSTRUCTION OF THIS FACILITY



**SUNNYSIDE COGENERATION ASSOC.**  
**SCA #2 ASH LANDFILL CONSTRUCTION DRAWINGS**  
**SEDIMENT POND #018 SURVEY CONTROL**  
 Carbon County, Utah

**TWIN PEAKS**  
 Engineering & Land Surveying  
 2264 NORTH 1450 EAST LEHI, UTAH 84043  
 (801) 450-3511, (801) 439-0700 FAX

DWG DATE: **JUNE 2013**  
 PLOT DATE: 06 August 2013

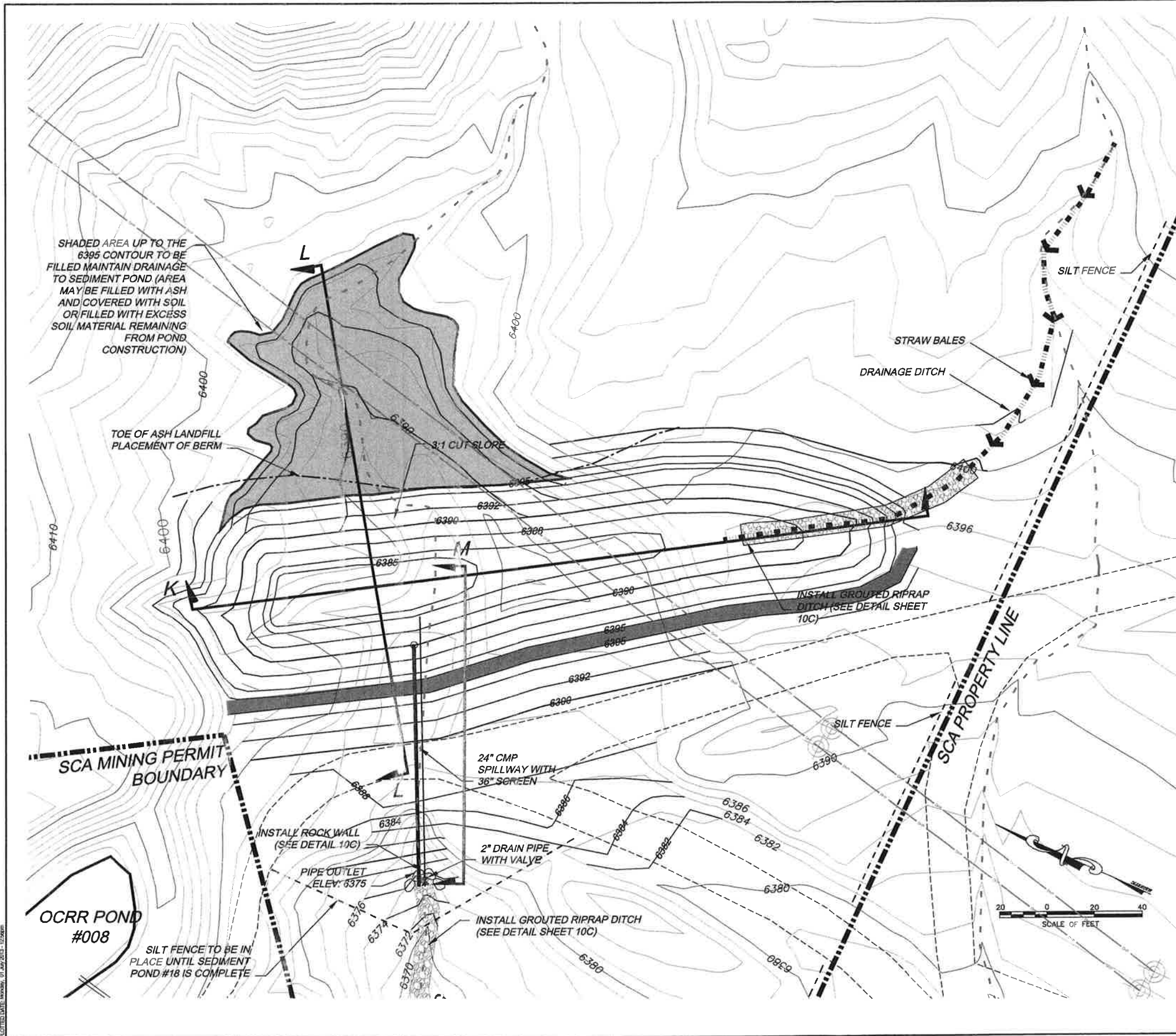


- NOTE:
1. CONTRACTOR TO INSTALL CLAY LINER IN POND TO ELEVATION 6358.0 (SEE DESIGN REPORT FOR LINER SPECIFICATIONS)
  2. DETECTA TAPE SHALL BE PLACED BETWEEN THE CLAY LINER AND THE SOIL COVER MATERIAL AT INTERVALS NOT EXCEEDING 5 FT.

**SUNNYSIDE COGENERATION ASSOC.**  
**SCA #2 ASH LANDFILL CONSTRUCTION DRAWINGS**  
**SEDIMENT POND #018 CROSS SECTIONS**  
 Carbon County, Utah

**TWIN PEAKS**  
 Engineering & Land Surveying  
 2284 NORTH 1450 EAST LEHI, UTAH 84043  
 (801) 450-3511, (801) 439-0700 FAX

DATE: JUNE 2013  
 PLOT DATE: 28 June 2013



Volume	
Base Surface	ASH LANDFILL 2
Comparison Surface	LOWER SED FINAL
Cut volume (unadjusted)	2450 Cu. Yd.
Fill volume (unadjusted)	1850 Cu. Yd.
Net volume (unadjusted)	600 Cu. Yd.<Cut>
Volume	
Base Surface	ASH LANDFILL 2
Comparison Surface	LOWER SED EX-FILL SURFAC
Cut volume (unadjusted)	0.0 Cu. Yd.
Fill volume (unadjusted)	850 Cu. Yd.
Net volume (unadjusted)	850 Cu. Yd.<Fill>

- NOTES:
1. APPROXIMATE VOLUME OF SEDIMENT TRAP 1.6 ACRE FEET.
  2. SINCE THE 2" DRAIN PIPE IS EXPECTED TO NORMALLY BE OPEN, NO WATER WILL REMAIN IN THIS SEDIMENT TRAP FOR LONG DURATIONS. THEREFORE NO CLAY LINER REQUIRED FOR THIS SEDIMENT TRAP.
  3. ALL DISTURBED AREAS TO BE REVEGETATED PER SCA REQUIREMENTS.

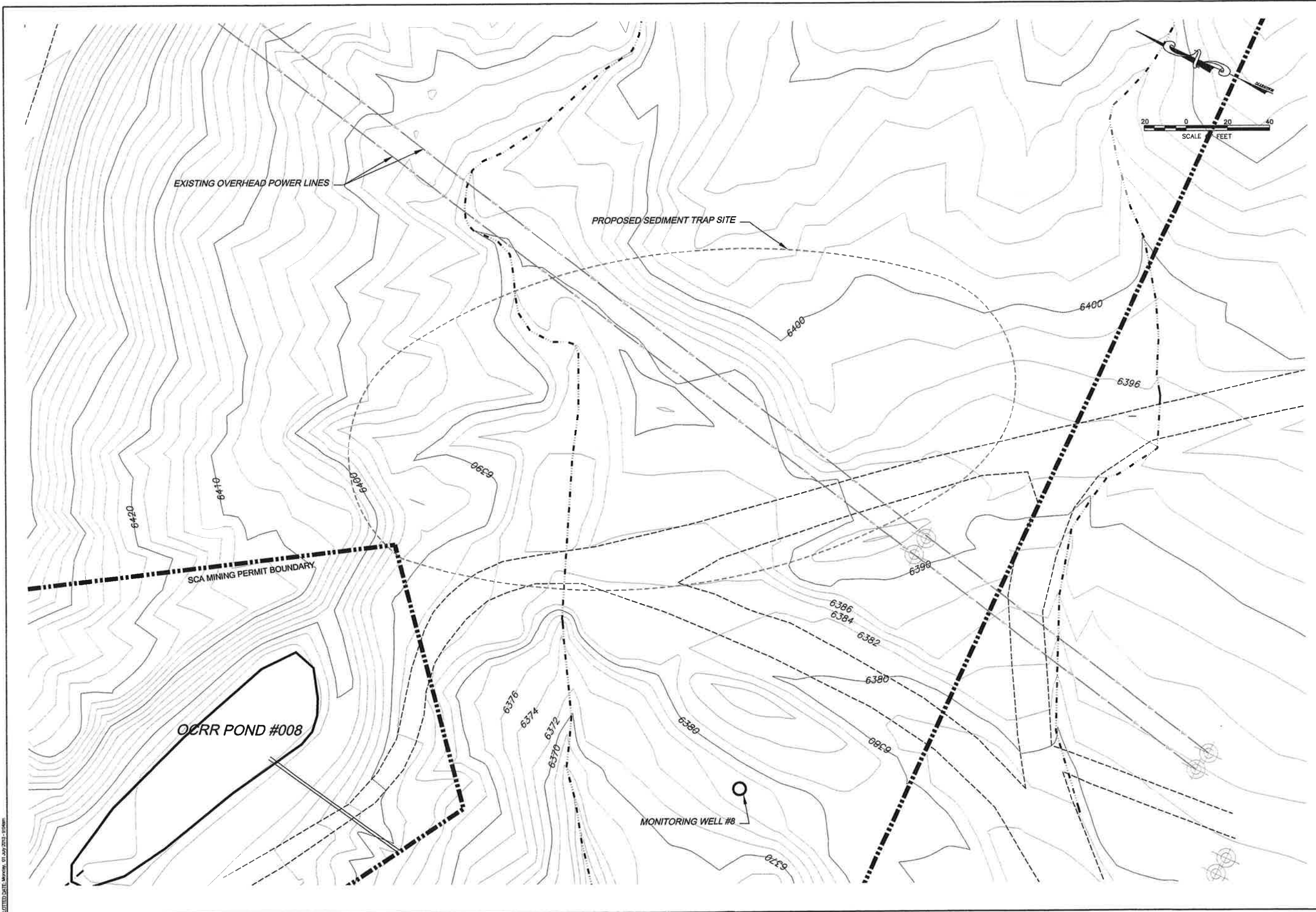
LEGEND

	PROPERTY LINE
	EXISTING ROADS
	EXISTING DRAINAGES
	EXISTING CONTOURS
	MAJOR
	MINOR
	PROPOSED CONTOURS
	MAJOR
	MINOR
	SILT FENCE
	DRAINAGES
	PROPOSED DIKE

**SUNNYSIDE COGENERATION ASSOC.**  
 SCA #2 ASH LANDFILL CONSTRUCTION DRAWINGS  
 SEDIMENT TRAP #1 DESIGN  
 Carbon County, Utah

**TWIN PEAKS**  
 Engineering & Land Surveying  
 2264 NORTH 1450 EAST LEHI, UTAH 84043  
 (801) 450-3511, (801) 439-0700 FAX

DWG DATE: JUNE 2013  
 PLOT DATE: 01 July 2013



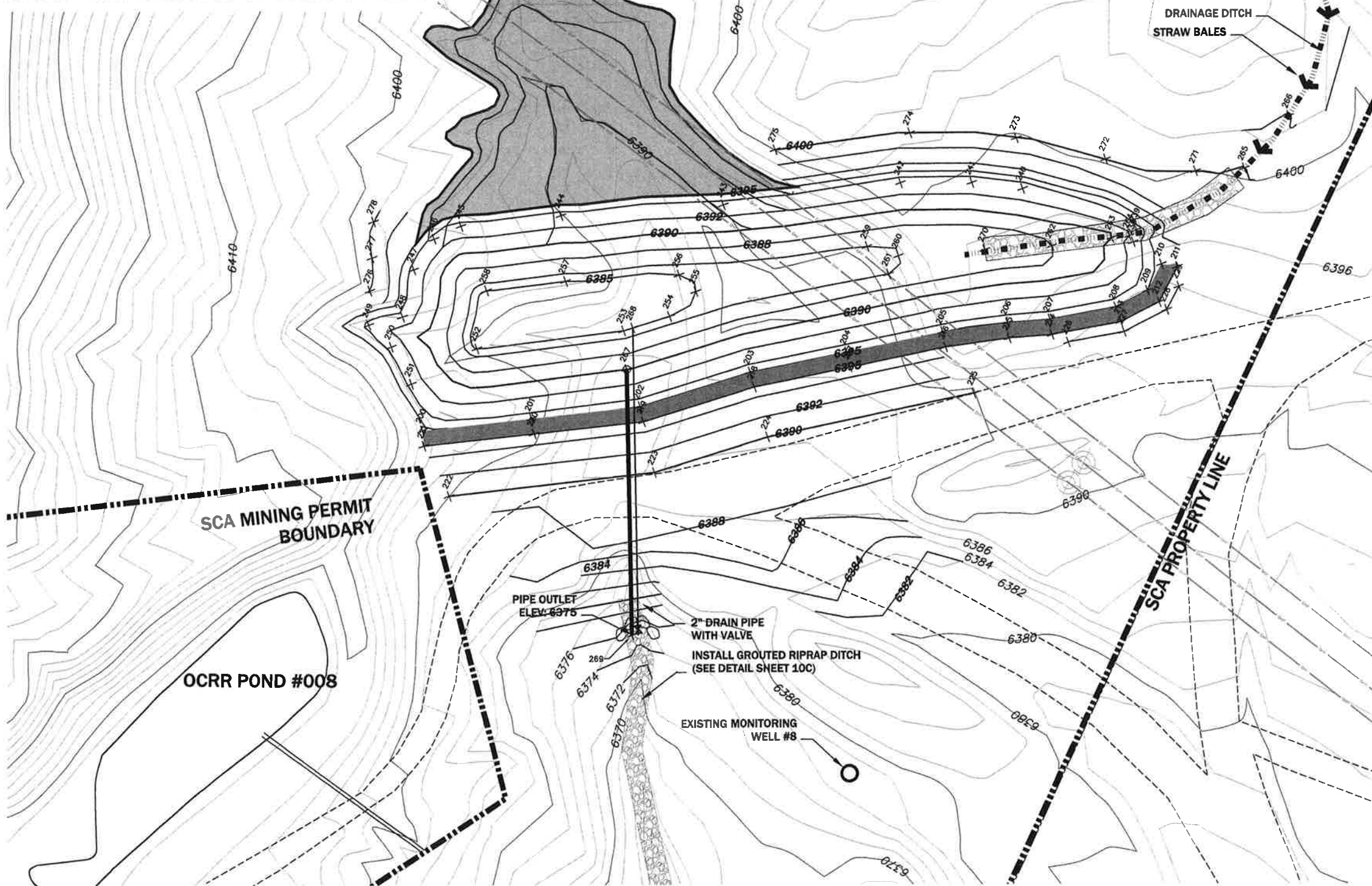
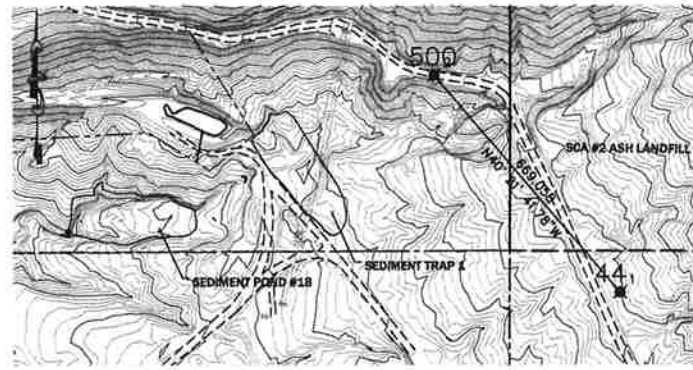
**SUNNYSIDE COGENERATION ASSOC.**  
**SCA #2 ASH LANDFILL CONSTRUCTION DRAWINGS**  
**SEDIMENT TRAP #1 EXISTING CONDITIONS**  
 Carbon County, Utah

**TWIN PEAKS**  
 Engineering & Land Surveying  
 2264 NORTH 1450 EAST LEHI, UTAH 84043  
 (801) 450-3511, (801) 439-0700 FAX

DATE: JUNE 2013  
 PLOT DATE: 01 July 2013

10A

PLOTTED DATE: MONDAY, 01 JULY 2013 - 10:45AM



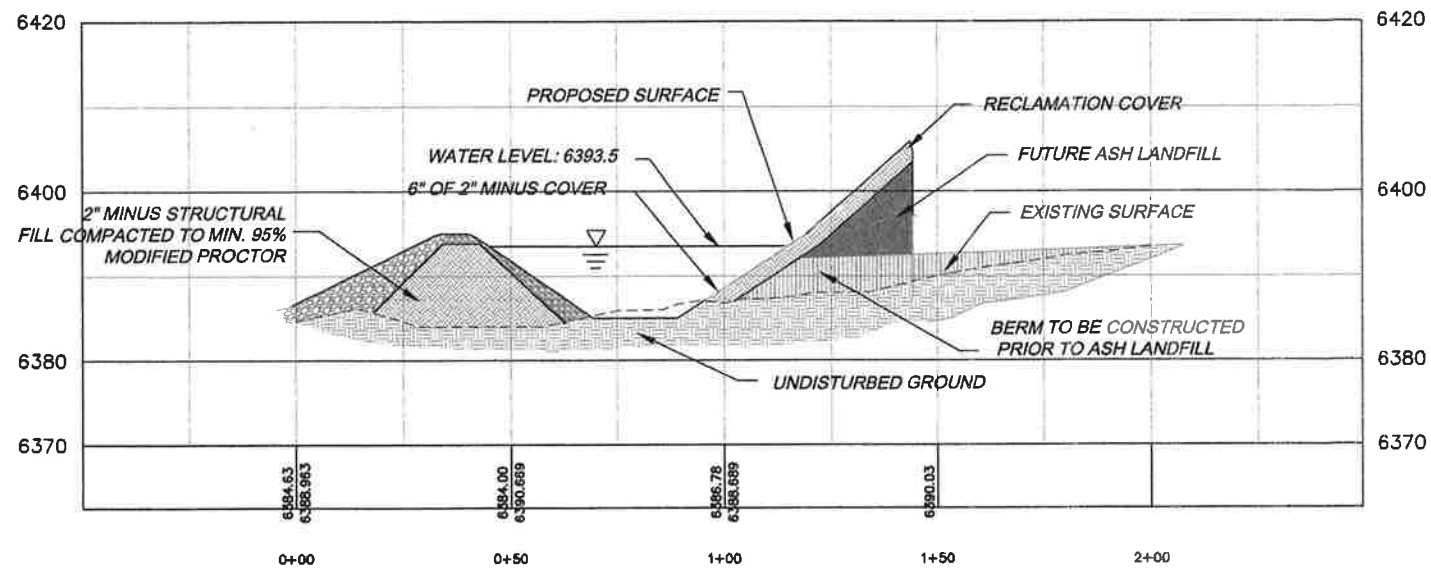
Point #	Northing	Easting	Elevation	Raw Description
1	42029.67	47670.37	5449.87	AERIAL POINT 44
2	42639.48	47137.06	6439.81	AERIAL POINT 500-gns
200	42405.81	46728.34	6395.00	TOP DIKE
201	42389.66	46750.25	6395.00	TOP DIKE
202	42333.52	46772.18	6395.00	TOP DIKE
203	42300.60	46802.20	6395.00	TOP DIKE
204	42270.07	46825.00	6395.00	TOP DIKE
205	42299.84	46847.80	6395.00	TOP DIKE
206	42218.50	46881.52	6395.00	TOP DIKE
207	42204.19	46889.55	6395.00	TOP DIKE
208	42183.19	46884.56	6395.00	TOP DIKE
209	42174.59	46895.56	6395.00	TOP DIKE
210	42174.19	46907.15	6395.00	TOP DIKE
211	42168.11	46909.86	6395.00	TOP DIKE
212	42168.78	46893.40	6395.00	TOP DIKE
213	42179.86	46880.18	6395.00	TOP DIKE
214	42200.97	46864.48	6395.00	TOP DIKE
215	42215.39	46856.38	6395.00	TOP DIKE
216	42236.10	46842.88	6395.00	TOP DIKE
217	42266.44	46820.23	6395.00	TOP DIKE
218	42296.77	46797.57	6395.00	TOP DIKE
219	42329.81	46767.38	6395.00	TOP DIKE
220	42366.90	46745.28	6395.00	TOP DIKE
221	42402.89	46723.21	6395.00	TOP DIKE
222	42385.84	46709.55	6390.00	TOE DIKE
223	42317.83	46761.30	6390.00	TOE DIKE
224	42284.00	46782.15	6390.00	TOE DIKE
225	42218.69	46831.23	6390.00	TOE DIKE
226	42193.94	46864.49	6394.00	TOE DIKE
227	42176.18	46877.28	6394.00	TOE DIKE
228	42164.84	46891.96	6394.00	TOE DIKE
229	42154.40	46902.07	6394.00	TOE DIKE
238	42187.61	46910.38	6393.80	WATER LEVEL
239	42186.41	46916.14	6393.50	WATER LEVEL
240	42286.17	46911.18	6393.50	WATER LEVEL
241	42383.83	46905.12	6393.50	WATER LEVEL
242	42278.79	46892.37	6393.50	WATER LEVEL
243	42357.43	46856.70	6393.60	WATER LEVEL
244	42392.48	46826.61	6393.50	WATER LEVEL
245	42425.79	46806.55	6393.50	WATER LEVEL
246	42433.06	46797.68	6393.50	WATER LEVEL
247	42435.20	46783.56	6393.60	WATER LEVEL
248	42431.38	46766.19	6393.50	WATER LEVEL
249	42441.59	46756.88	6393.50	WATER LEVEL
250	42430.24	46752.82	6393.60	WATER LEVEL
251	42411.35	46742.99	6393.50	WATER LEVEL
252	42400.16	46766.99	6385.00	TOE POND
253	42351.76	46796.14	6385.00	TOE POND
254	42327.97	46808.76	6385.00	TOE POND
255	42332.94	46821.70	6385.00	TOE POND
256	42341.56	46824.75	6385.00	TOE POND
257	42380.14	46804.11	6385.00	TOE POND
258	42406.42	46787.89	6385.00	TOE POND
259	42380.25	46865.37	6386.00	INNER POND
260	42387.84	46867.28	6386.00	INNER POND
261	42268.12	46869.30	6386.00	INNER POND
262	42215.47	46896.77	6388.00	DRAINAGE CHANNEL
263	42195.96	46908.32	6380.00	DRAINAGE CHANNEL
264	42189.96	46911.88	6392.00	DRAINAGE CHANNEL
265	42160.77	46954.42	6400.00	DRAINAGE CHANNEL
266	42153.96	46980.10	6402.00	DRAINAGE CHANNEL
267	42344.34	46793.08	6382.00	PIPE FLOW LINE
268	42349.00	46799.68	6388.00	FLOW 2" DRAIN LINE
269	42299.06	46690.11	6378.00	INVERT 18" CMP
270	42238.28	46883.87	6387.30	END GROUDED DITCH
271	42177.28	46945.60	6400.00	top of cut
272	42210.97	46935.05	6400.00	top of cut
273	42245.65	46928.07	6400.00	top of cut
274	42283.76	46912.55	6400.00	top of cut
275	42328.42	46884.93	6400.00	top of cut
276	42446.76	46759.54	6398.00	top of cut
277	42451.43	46781.09	6398.00	top of cut
278	42466.81	46794.07	6398.00	top of cut

NOTE: STAKEOUT COORDINATES ARE PROVIDED FOR THE CONVENIENCE OF THE CONSTRUCTION TEAM.  
 THE CONTRACTOR SHALL BE RESPONSIBLE FOR PROPER LAYOUT AND CONSTRUCTION OF THIS FACILITY

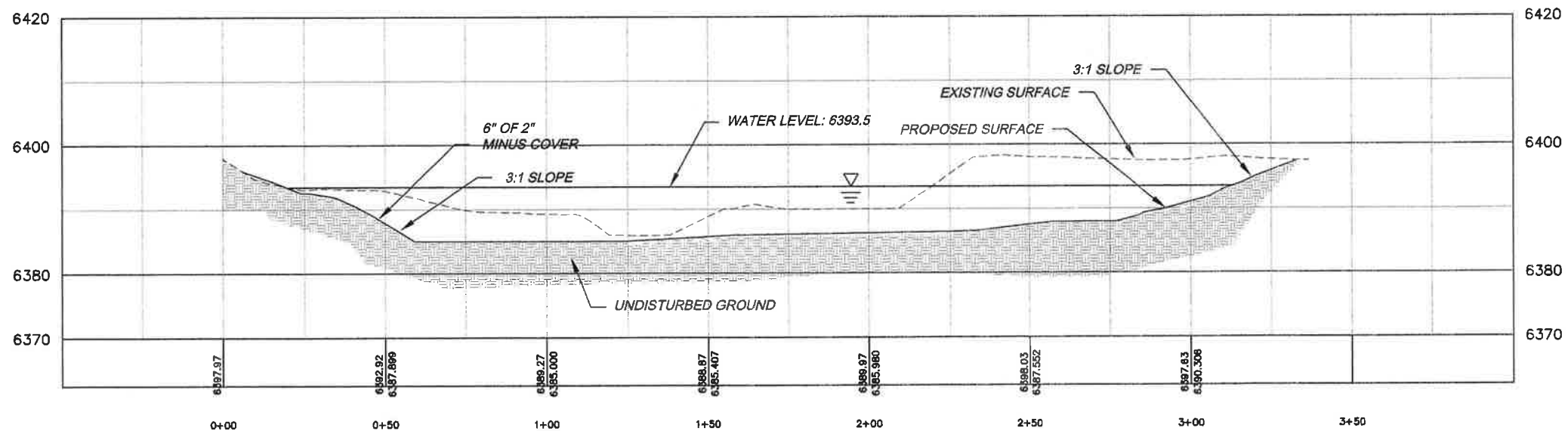
**SUNNYSIDE COGENERATION ASSOC.**  
**SCA #2 ASH LANDFILL CONSTRUCTION DRAWINGS**  
**SEDIMENT TRAP #1 SURVEY CONTROL**  
 Carbon County, Utah

**TWIN PEAKS**  
 Engineering & Land Surveying  
 2264 NORTH 1450 EAST LEHI, UTAH 84043  
 (801) 450-3511, (801) 439-0700 FAX

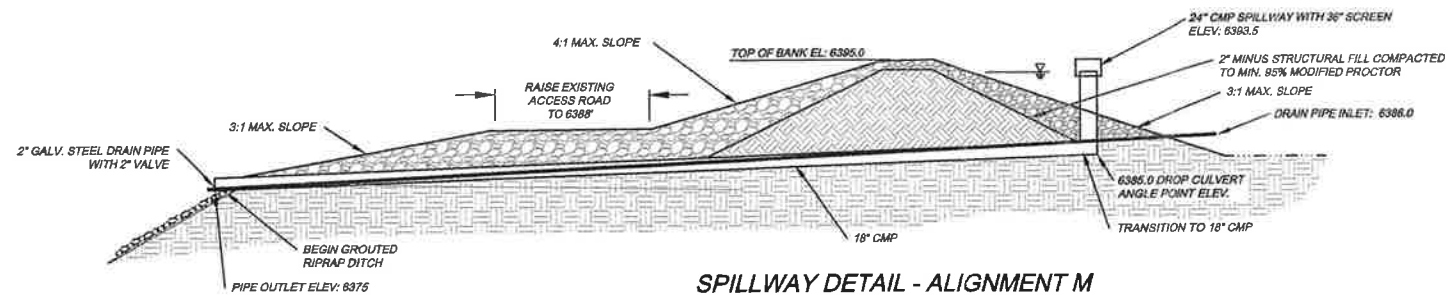
DATE: JUNE 2013  
 DATE: 03 August 2013



POND ALIGNMENT L SCALE: H 1"=30 V 1"=15



POND ALIGNMENT K SCALE: H 1"=20 V 1"=10



SPILLWAY DETAIL - ALIGNMENT M

**SUNNYSIDE COGENERATION ASSOC.**  
 SCA #2 ASH LANDFILL GROUNDWATER PERMIT SUBMITTAL  
 SEDIMENT TRAP #1 CROSS SECTION  
 Carbon County, Utah

**TWIN PEAKS**  
 Engineering & Land Surveying  
 2254 NORTH 1450 EAST LEHI, UTAH 84043  
 (801) 450-3511, (801) 439-0700 FAX

DWG DATE: **JUNE 2013**  
 PLOT DATE: 12 August 2013

SHEET

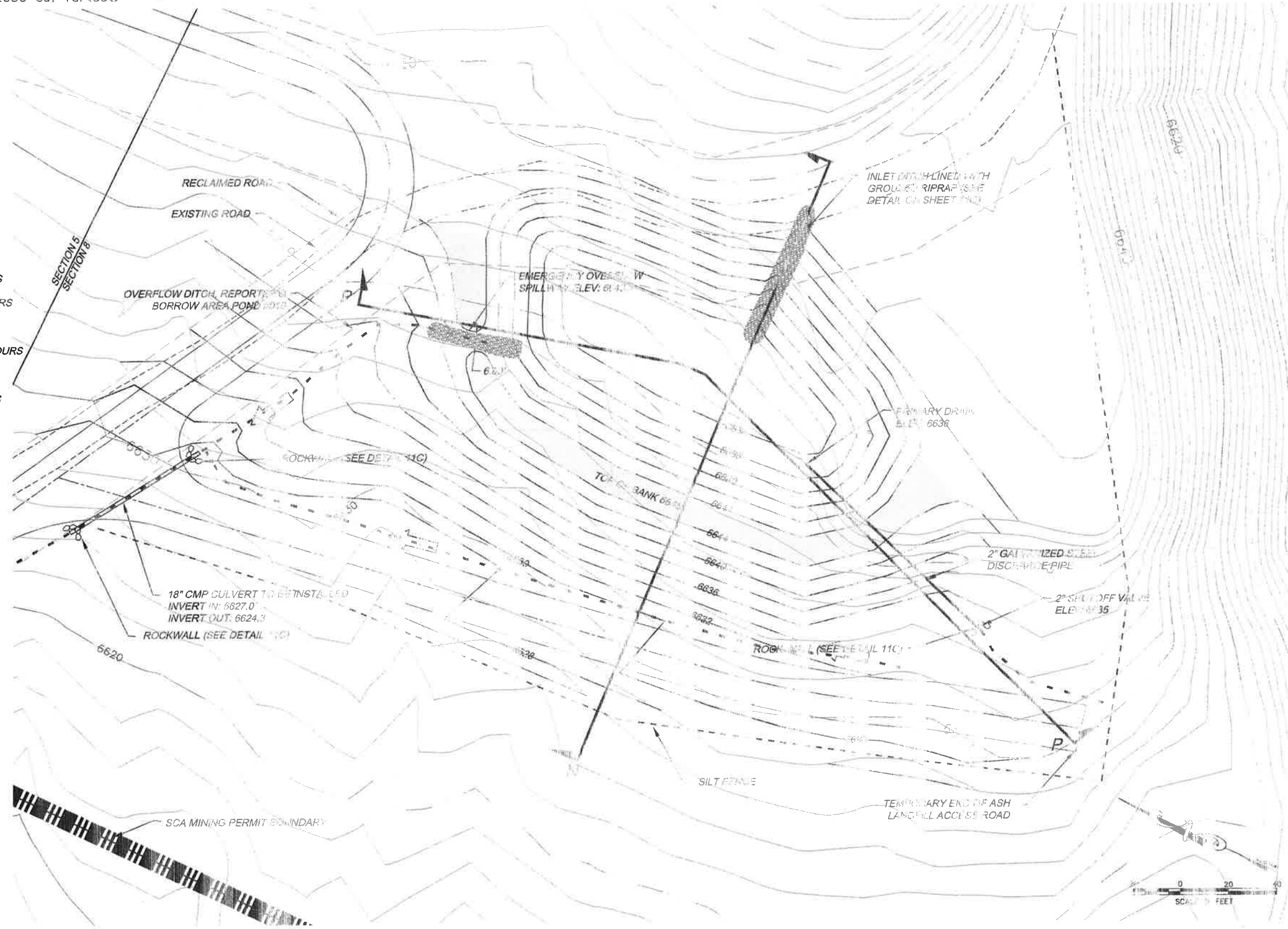
PLOTTED DATE: Monday, 12 August 2013 10:52pm



Volume  
 Base Surface ASH LANDFILL 2  
 Comparison Surface UPPER POND FINAL  
 Cut volume (unadjusted) 4700 Cu. Yd.  
 Fill volume (unadjusted) 2650 Cu. Yd.  
 Net volume (unadjusted) 2050 Cu. Yd.<Cut>

NOTES:  
 1. APPROXIMATE VOLUME OF SEDIMENT TRAP 1.4 ACRE FEET.  
 2. SINCE THE 2" DRAIN PIPE IS EXPECTED TO NORMALLY BE OPEN, NO WATER WILL REMAIN IN THIS SEDIMENT TRAP FOR LONG DURATIONS. THEREFORE NO CLAY LINER REQUIRED FOR THIS SEDIMENT TRAP.

- LEGEND
- PROPERTY LINE
  - EXISTING ROADS
  - RECLAIMED ROADS
  - EXISTING CONTOURS  
MAJOR  
MINOR
  - PROPOSED CONTOURS  
MAJOR  
MINOR
  - PROPOSED ROADS
  - SILT FENCE
  - DRAINAGES
  - ██████ PROPOSED DIKE

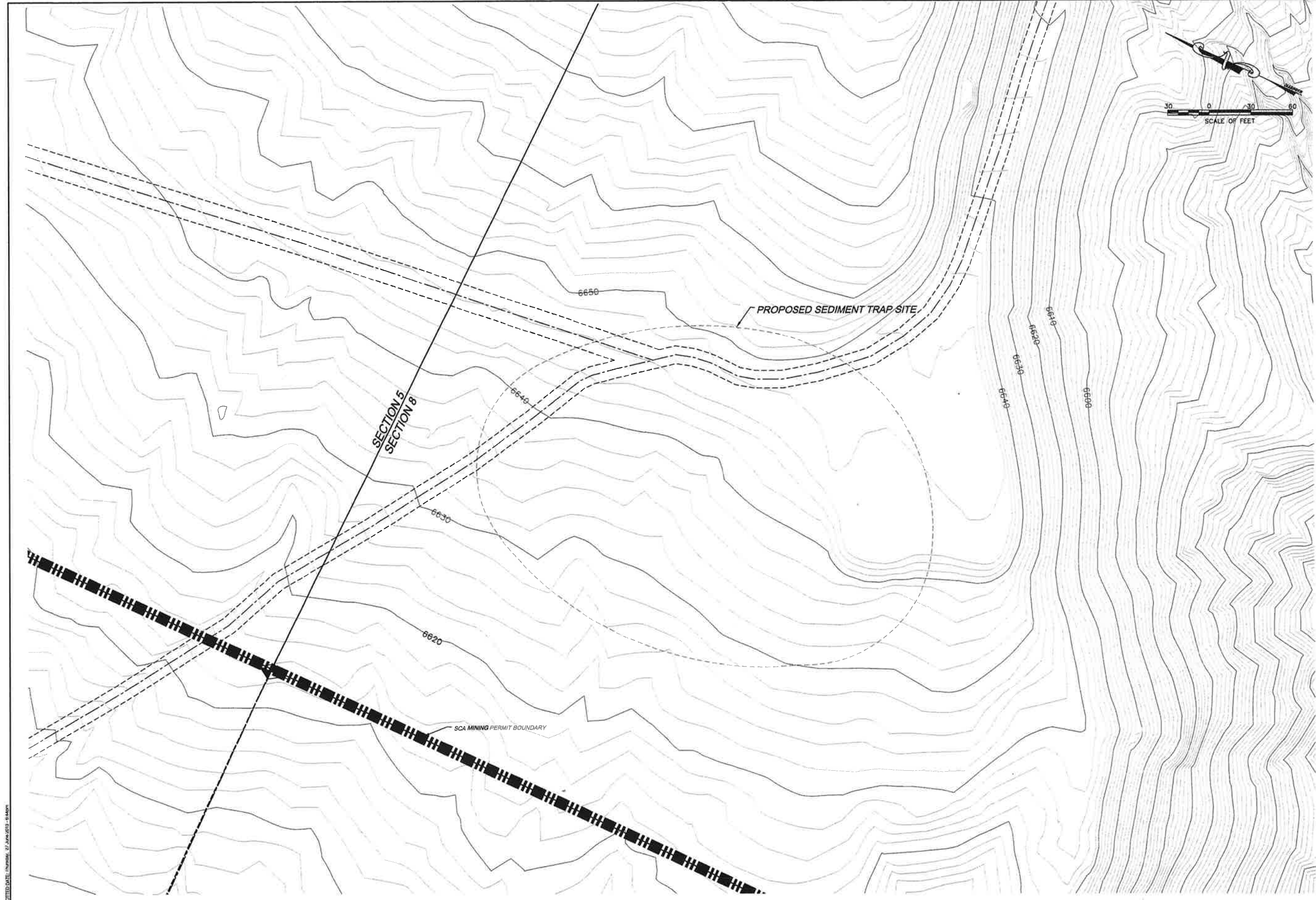


**SUNNYSIDE COGENERATION #5500-**  
**SCA #2 ASH LANDFILL CONSTRUCTION DRAWINGS**  
**SEDIMENT TRAP #2 DESIGN**  
 Carbon County, Utah

**TWIN PEAKS**  
 Engineering & Land Surveying  
2400 N. MAIN ST. SALT LAKE CITY, UT 84143-3000  
 (801) 450-3511, (801) 439-0700 FAX

DATE: NOV 2012  
 DATE: 29 June 2013

PLOTTED DATE: 29 June 2013 12:28PM



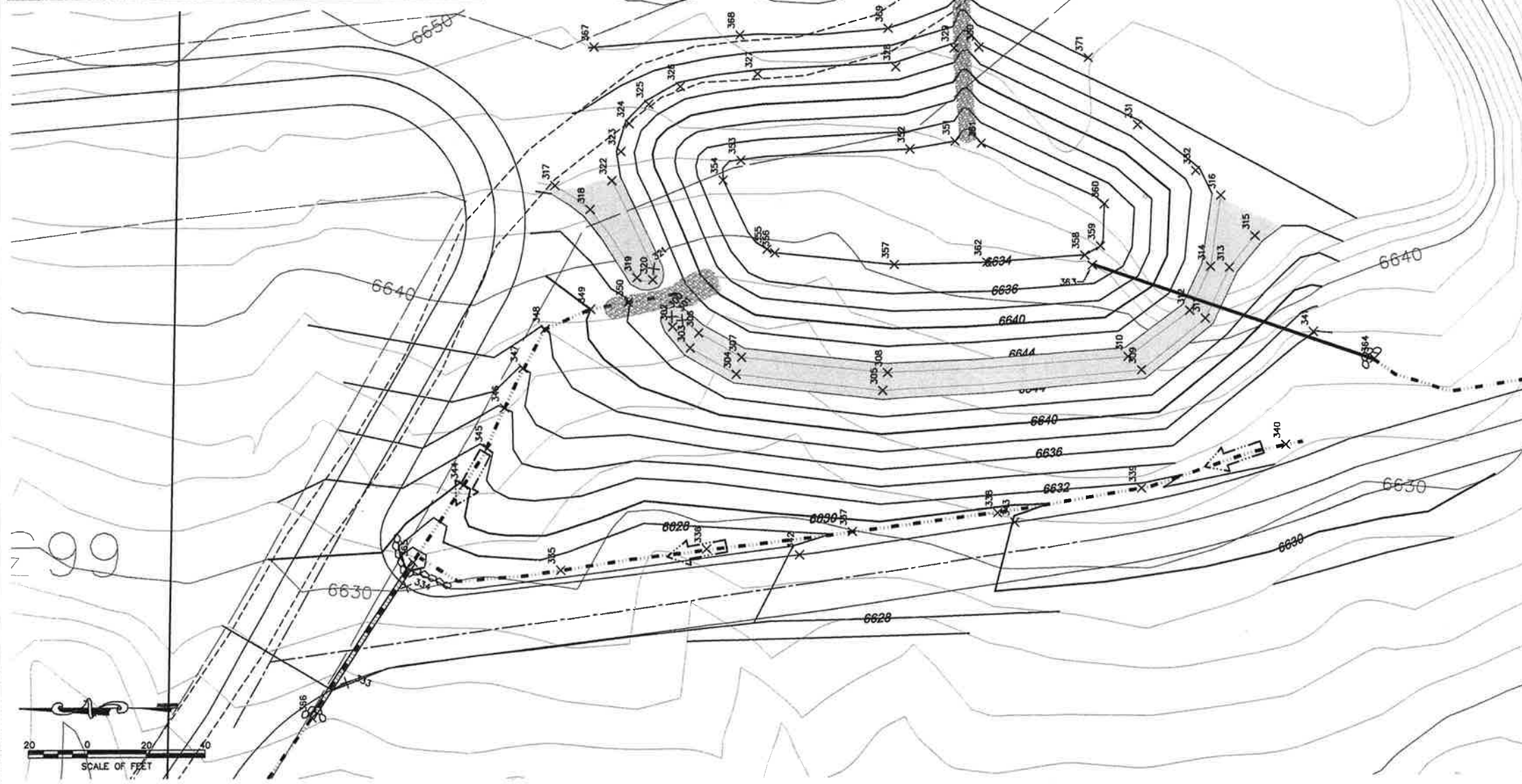
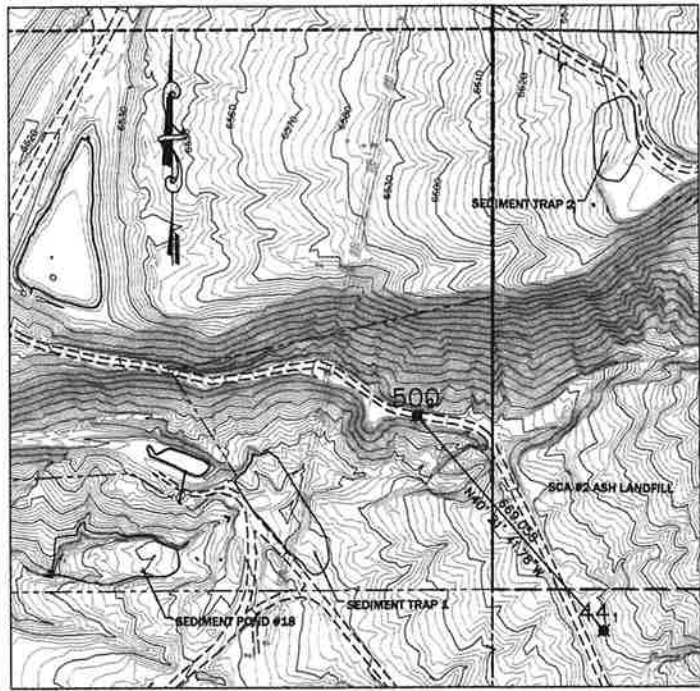
PLOT DATE: Thursday, 27 June 2013 14:40pm

**SUNNYSIDE COGENERATION ASSOC.**  
 SCA #2 ASH LANDFILL CONSTRUCTION DRAWINGS  
 SEDIMENT TRAP #2 EXISTING CONDITIONS  
 Carbon County, Utah

**TWIN PEAKS**  
 Engineering & Land Surveying  
 2264 NORTH 1450 EAST LEHI, UTAH 84043  
 (801) 450-3511, (801) 439-0700 FAX

DWG DATE: **JUNE 2013**  
 PLOT DATE: 27 June 2013

SHEET  
**11A**  
 of **12**

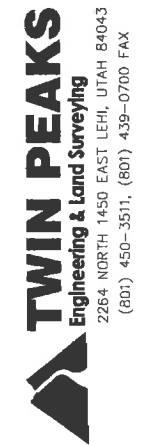


Point #	Northing	Easting	Elevation	Raw Description
1	42029.87	47870.37	6448.87	AERIAL POINT 44
2	42599.46	47137.08	6439.87	AERIAL POINT 500-gms
300	43276.01	47868.86	6646.00	TOP DIKE
301	43272.51	47864.38	6646.00	TOP DIKE
302	43276.77	47862.07	6646.00	TOP DIKE
303	43268.76	47864.74	6645.00	TOP DIKE
304	43254.09	47845.82	6646.00	TOP DIKE
305	43204.15	47839.78	6645.00	TOP DIKE
306	43266.74	47859.91	6645.00	TOP DIKE
307	43252.19	47851.46	6645.00	TOP DIKE
308	43202.51	47848.93	6646.00	TOP DIKE
309	43115.90	47848.47	6646.00	TOP DIKE
310	43120.03	47851.13	6645.00	TOP DIKE
311	43093.66	47864.13	6645.00	TOP DIKE
312	43088.99	47866.89	6646.00	TOP DIKE
313	43085.30	47861.86	6646.00	TOP DIKE
314	43081.77	47862.02	6646.00	TOP DIKE
315	43076.80	47862.46	6645.00	TOP DIKE
316	43068.34	47866.44	6642.00	TOP DIKE
317	43016.70	47810.77	6646.00	TOP DIKE
318	43003.87	47802.56	6646.00	TOP DIKE
319	42871.91	47879.09	6646.00	TOP DIKE
320	43282.54	47878.28	6645.00	TOP DIKE
321	43382.19	47862.12	6646.00	TOP DIKE
322	43296.34	47812.41	6646.00	TOP DIKE
323	43293.15	47822.38	6643.80	SLOPE AT WATER LEVEL
324	43290.19	47831.84	6643.50	SLOPE AT WATER LEVEL
325	43283.64	47838.59	6643.80	SLOPE AT WATER LEVEL
326	43272.85	47844.64	6643.80	SLOPE AT WATER LEVEL
327	43246.20	47848.88	6643.50	SLOPE AT WATER LEVEL
328	43199.19	47851.09	6643.50	SLOPE AT WATER LEVEL
329	43179.23	47857.47	6643.90	SLOPE AT WATER LEVEL
330	43170.16	47867.71	6643.50	SLOPE AT WATER LEVEL
331	43116.41	47830.81	6643.50	SLOPE AT WATER LEVEL
332	43096.65	47834.93	6643.50	SLOPE AT WATER LEVEL
333	43087.10	47440.26	6628.00	EDGE OF ROAD
334	43066.52	47473.86	6629.00	EDGE OF ROAD
335	43314.93	47478.38	6627.40	DRAINAGE
336	43264.39	47485.42	6627.90	DRAINAGE
337	43214.78	47491.22	6628.70	DRAINAGE
338	43186.52	47497.46	6628.50	DRAINAGE
339	43115.74	47505.89	6631.55	DRAINAGE
340	43066.37	47520.42	6632.30	DRAINAGE
341	43068.84	47558.36	6638.00	TOE DIKE
342	43232.76	47483.35	6628.20	EDR
343	43188.13	47494.10	6630.20	EDR
344	43347.19	47507.80	6630.00	DRAINAGE
345	43339.02	47520.44	6632.00	DRAINAGE
346	43333.17	47534.33	6634.00	DRAINAGE
347	43326.88	47548.01	6636.00	DRAINAGE
348	43319.13	47561.44	6638.00	DRAINAGE
349	43303.87	47568.28	6640.00	DRAINAGE
350	43290.82	47570.59	6642.00	DRAINAGE
351	43179.08	47525.41	6634.00	TOE POND
352	43194.46	47523.78	6634.00	TOE POND
353	43252.13	47519.20	6634.00	TOE POND
354	43258.24	47512.41	6634.00	TOE POND
355	43243.36	47588.82	6634.00	TOE POND
356	43240.74	47587.39	6634.00	TOE POND
357	43200.02	47583.14	6634.00	TOE POND
358	43184.86	47586.12	6634.00	TOE POND
359	43129.34	47589.20	6634.00	TOE POND
360	43127.98	47503.87	6634.00	TOE POND
361	43170.10	47524.70	6634.00	TOE POND
362	43186.42	47563.81	6634.00	TOE POND
363	43132.13	47582.65	6636.00	2" DRAIN PIPE INLET
364	43035.08	47548.87	6635.00	2" PIPE OUTLET
365	43384.40	47481.22	6625.00	18" dia culvert
366	43388.90	47428.25	6624.00	18" dia culvert
367	43302.10	47558.34	6648.00	top of cut
368	43252.27	47562.30	6648.00	top of cut
369	43201.74	47684.37	6648.00	top of cut
370	43176.04	47675.39	6648.00	top of cut
371	43133.17	47653.97	6648.00	top of cut

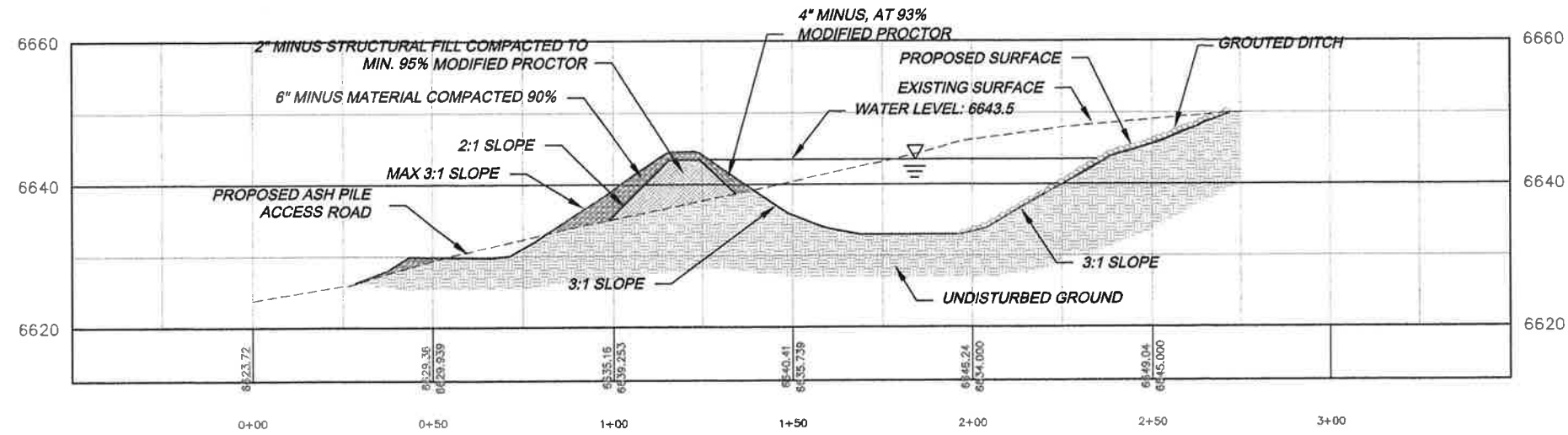
NOTE: STAKEOUT COORDINATES ARE PROVIDED FOR THE CONVENIENCE OF THE CONSTRUCTION TEAM.

THE CONTRACTOR SHALL BE RESPONSIBLE FOR PROPER LAYOUT AND CONSTRUCTION OF THIS FACILITY

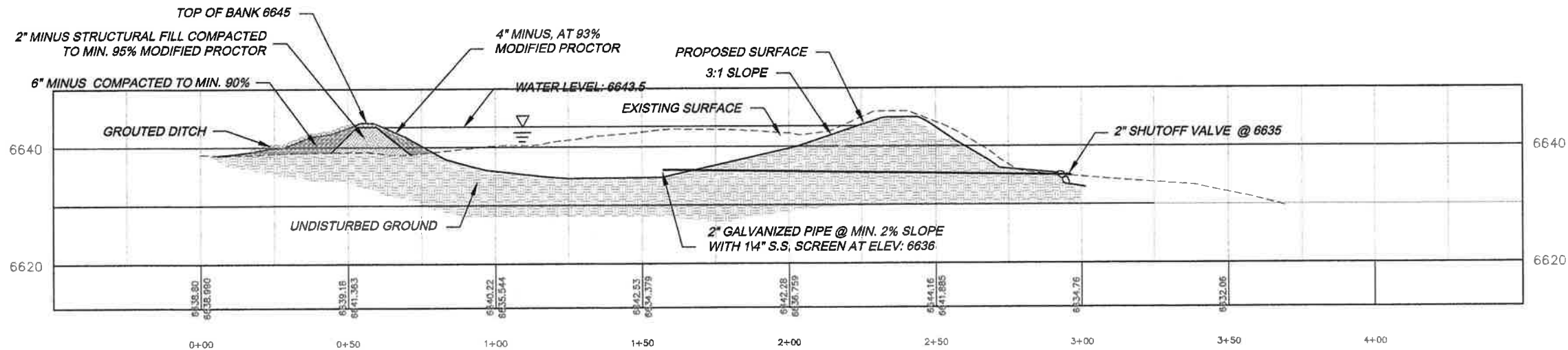
**SUNNYSIDE COGENERATION ASSOC.**  
**SCA #2 ASH LANDFILL CONSTRUCTION DRAWINGS**  
**SEDIMENT POND #2 SURVEY CONTROL**  
 Carbon County, Utah



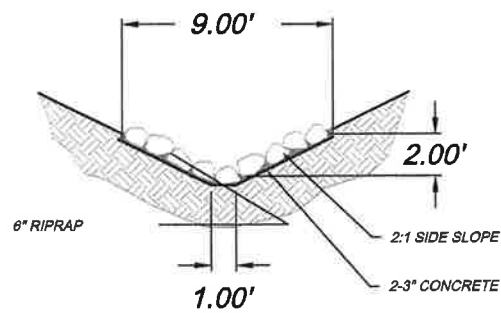
DATE: JUNE 2013  
 PLOT DATE: 06 August 2013



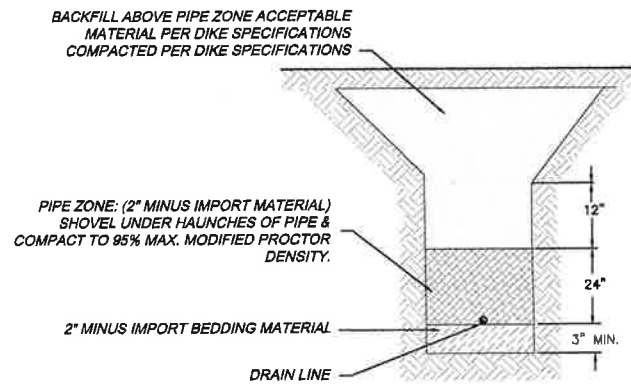
ALIGNMENT N SCALE: H 1"=20 V 1"=10



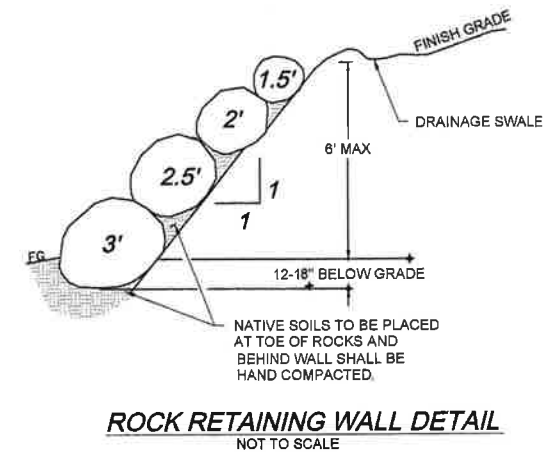
ALIGNMENT P SCALE: H 1"=20 V 1"=10



DITCH WITH GROUTED RIPRAP  
SCALE: N.T.S.



TYPICAL PIPE TRENCH  
SCALE: N.T.S.



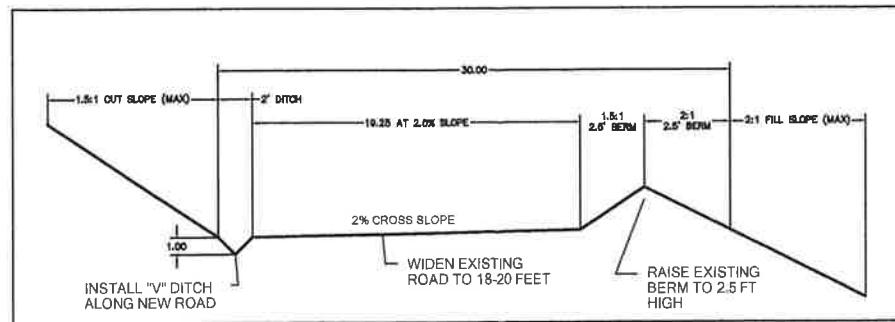
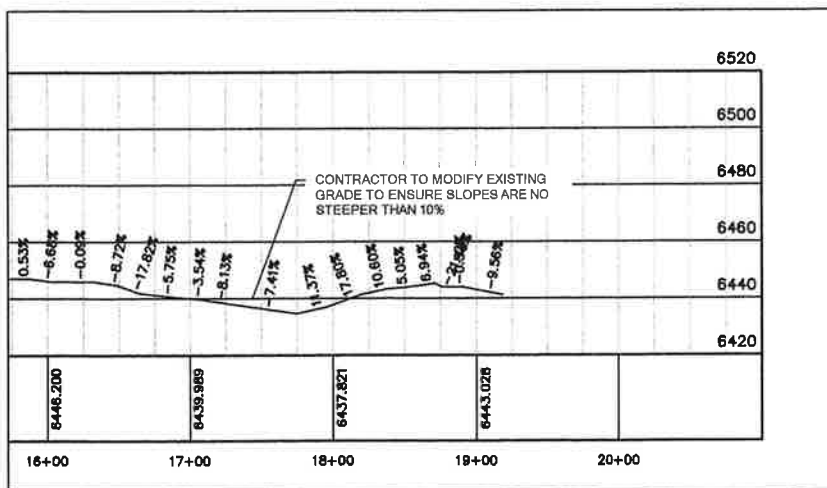
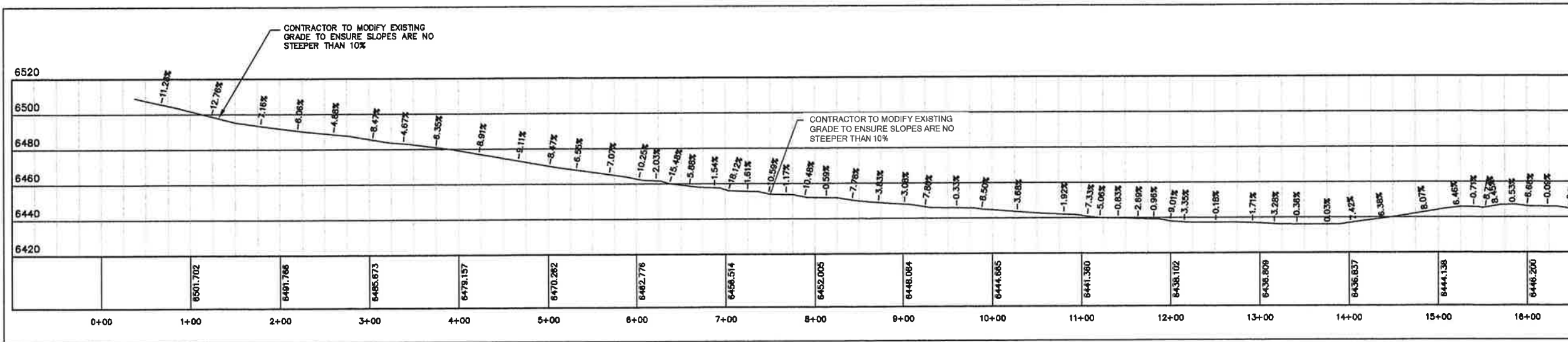
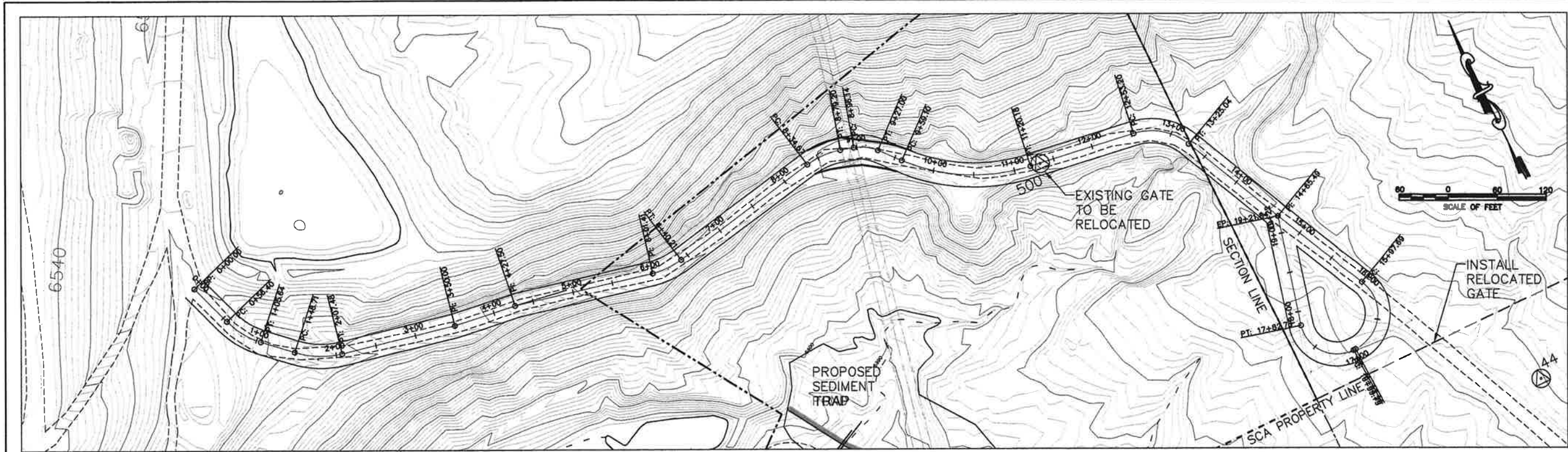
ROCK RETAINING WALL DETAIL  
NOT TO SCALE

**SUNNYSIDE COGENERATION ASSOC.**  
SCA #2 ASH LANDFILL CONTRACTION DRAWINGS  
SEDIMENT TRAP #2 CROSS SECTIONS & DETAILS  
Carbon County, Utah

**TWIN PEAKS**  
Engineering & Land Surveying  
2264 NORTH 1450 EAST LEHI, UTAH 84043  
(801) 450-3511, (801) 439-0700 FAX

DATE: JUNE 2013  
PLOT DATE: 28 June 2013

SHEET: 11C  
12



**SUNNYSIDE COGENERATION ASSOC.**  
 SCA #2 ASH LANDFILL-CONSTRUCTION DRAWINGS  
 LOWER ACCESS ROAD DESIGN  
 Carbon County, Utah

**TWIN PEAKS**  
 Engineering & Land Surveying  
 2264 NORTH 1450 EAST LEHI, UTAH 84043  
 (801) 450-3511, (801) 439-0700 FAX

DWG DATE  
**AUGUST 2013**

PLT DATE  
 13 August 2013

HEET  
 12  
 12

PLOTTED DATE: Tuesday, 13 August 2013 - 11:37am